

Datasheet for ABIN2790328

anti-DNASEX antibody (Middle Region)[Go to Product page](#)**1** Image

Overview

Quantity:	100 µL
Target:	DNASEX
Binding Specificity:	Middle Region
Reactivity:	Human, Mouse, Rat, Cow, Dog, Guinea Pig, Horse, Rabbit
Host:	Rabbit
Clonality:	Polyclonal
Conjugate:	This DNASEX antibody is un-conjugated
Application:	Western Blotting (WB)

Product Details

Immunogen:	The immunogen is a synthetic peptide directed towards the middle region of Mouse Dnase111
Sequence:	ADCASLTKKR LKSLLLRTKA GFHWVIPDGE DTTVRASTNC TYDRIVVHGQ
Predicted Reactivity:	Cow: 93%, Dog: 100%, Guinea Pig: 100%, Horse: 100%, Human: 100%, Mouse: 92%, Rabbit: 93%, Rat: 100%
Characteristics:	This is a rabbit polyclonal antibody against Dnase111. It was validated on Western Blot.
Purification:	Affinity Purified

Target Details

Target:	DNASEX
Alternative Name:	Dnase111 (DNASEX Products)

Target Details

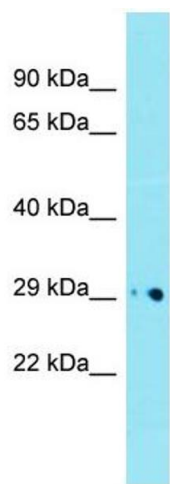
Background:	The function of this protein remains unknown. Alias Symbols: 2310005K03Rik, AI324885, Dnase1II, Dnasex, Dnl1II, G4.8 Protein Size: 314
Molecular Weight:	32 kDa
Gene ID:	69537
NCBI Accession:	NM_027109 , NP_081385
UniProt:	Q9D7J6

Application Details

Application Notes:	Optimal working dilutions should be determined experimentally by the investigator.
Comment:	Antigen size: 314 AA
Restrictions:	For Research Use only

Handling

Format:	Liquid
Concentration:	Lot specific
Buffer:	Liquid. Purified antibody supplied in 1x PBS buffer with 0.09 % (w/v) sodium azide and 2 % sucrose.
Preservative:	Sodium azide
Precaution of Use:	This product contains Sodium azide: a POISONOUS AND HAZARDOUS SUBSTANCE which should be handled by trained staff only.
Handling Advice:	Avoid repeated freeze-thaw cycles.
Storage:	-20 °C
Storage Comment:	For short term use, store at 2-8°C up to 1 week. For long term storage, store at -20°C in small aliquots to prevent freeze-thaw cycles.



Western Blotting

Image 1. Host: Rabbit
Target Name: Dnase1l1
Sample Tissue: Mouse Heart lysates
Antibody Dilution: 1.0 µg/mL