

## Datasheet for ABIN2790334 anti-MED20 antibody (Middle Region)



[Go to Product page](#)

### 1 Image

#### Overview

Quantity:	100 µL
Target:	MED20
Binding Specificity:	Middle Region
Reactivity:	Human, Rat, Mouse, Cow, Dog, Goat, Guinea Pig, Horse, Rabbit
Host:	Rabbit
Clonality:	Polyclonal
Conjugate:	This MED20 antibody is un-conjugated
Application:	Western Blotting (WB)

#### Product Details

Immunogen:	The immunogen is a synthetic peptide directed towards the middle region of Human MED20
Sequence:	PCLIADTNFD VLMVKLGFF QSAKASKIET RGTRYQYCDF LVKVGTVTMG
Predicted Reactivity:	Cow: 100%, Dog: 100%, Goat: 100%, Guinea Pig: 100%, Horse: 100%, Human: 100%, Mouse: 100%, Rabbit: 100%, Rat: 100%
Characteristics:	This is a rabbit polyclonal antibody against MED20. It was validated on Western Blot.
Purification:	Affinity Purified

#### Target Details

Target:	MED20
Alternative Name:	MED20 ( <a href="#">MED20 Products</a> )

## Target Details

Background:	<p>MED20 is a subunit of the Mediator complex, a multiprotein coactivator of RNA transcription that interacts with DNA-bound transcriptional activators, RNA polymerase II, and general initiation factors.</p> <p>Alias Symbols: DKFZp586D2223, MGC29869, PRO0213, TRFP</p> <p>Protein Interaction Partner: MED18, UBC, CDK8, CDK19, MED19, POLR1B, CD300C, MED26, EPAS1, FBXW7, ELAVL1, MED10, MED28, ZC3H13, MED12, TADA2A, MED1, MED29, MED8, MED30, ESR2, ESR1, PPARGC1A, MED9,</p> <p>Protein Size: 212</p>
Molecular Weight:	23 kDa
Gene ID:	9477
NCBI Accession:	<a href="#">NM_004275</a> , <a href="#">NP_004266</a>
UniProt:	<a href="#">Q9H944</a>
Pathways:	<a href="#">Regulation of Lipid Metabolism by PPARalpha</a>

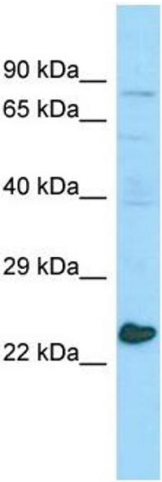
## Application Details

Application Notes:	Optimal working dilutions should be determined experimentally by the investigator.
Comment:	Antigen size: 212 AA
Restrictions:	For Research Use only

## Handling

Format:	Liquid
Concentration:	Lot specific
Buffer:	Liquid. Purified antibody supplied in 1x PBS buffer with 0.09 % (w/v) sodium azide and 2 % sucrose.
Preservative:	Sodium azide
Precaution of Use:	This product contains Sodium azide: a POISONOUS AND HAZARDOUS SUBSTANCE which should be handled by trained staff only.
Handling Advice:	Avoid repeated freeze-thaw cycles.
Storage:	-20 °C
Storage Comment:	For short term use, store at 2-8°C up to 1 week. For long term storage, store at -20°C in small

aliquots to prevent freeze-thaw cycles.



**Western Blotting**

**Image 1.** WB Suggested Anti-MED20 Antibody Titration: 1.0 ug/ml Positive Control: RPMI-8226 Whole Cell