

Datasheet for ABIN2790338  
**anti-PIP4K2C antibody (C-Term)**



[Go to Product page](#)

1 Image

## Overview

Quantity:	100 µL
Target:	PIP4K2C
Binding Specificity:	C-Term
Reactivity:	Human, Mouse, Rat, Pig, Rabbit, Cow, Dog, Guinea Pig, Horse
Host:	Rabbit
Clonality:	Polyclonal
Application:	Western Blotting (WB)

## Product Details

Immunogen:	The immunogen is a synthetic peptide directed towards the C-terminal region of Human PIP4K2C
Sequence:	LKDMDFLNKN QKVYIGEEEEK KIFLEKLKRD VEFLVQLKIM DYSLLGIIHD
Predicted Reactivity:	Cow: 93%, Dog: 93%, Guinea Pig: 93%, Horse: 93%, Human: 100%, Mouse: 93%, Pig: 100%, Rabbit: 100%, Rat: 93%
Characteristics:	This is a rabbit polyclonal antibody against PIP4K2C. It was validated on Western Blot.
Purification:	Affinity Purified

## Target Details

Target:	PIP4K2C
Alternative Name:	PIP4K2C ( <a href="#">PIP4K2C Products</a> )

## Target Details

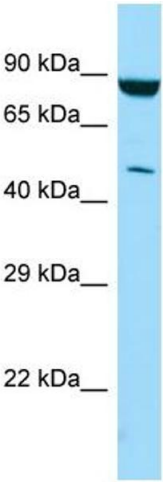
Background:	PIP4K2C may play an important role in the production of Phosphatidylinositol bisphosphate (PIP2), in the endoplasmic reticulum. Alias Symbols: FLJ22055, PIP5K2C Protein Interaction Partner: FBXO25, CSNK2A2, PIP4K2C, APP, ELAVL1, UBC, BTK, Protein Size: 421
Molecular Weight:	47 kDa
Gene ID:	79837
NCBI Accession:	<a href="#">NM_024779</a> , <a href="#">NP_079055</a>
UniProt:	<a href="#">Q8TBX8</a>
Pathways:	<a href="#">Inositol Metabolic Process</a>

## Application Details

Application Notes:	Optimal working dilutions should be determined experimentally by the investigator.
Comment:	Antigen size: 421 AA
Restrictions:	For Research Use only

## Handling

Format:	Liquid
Concentration:	Lot specific
Buffer:	Liquid. Purified antibody supplied in 1x PBS buffer with 0.09 % (w/v) sodium azide and 2 % sucrose.
Preservative:	Sodium azide
Precaution of Use:	This product contains Sodium azide: a POISONOUS AND HAZARDOUS SUBSTANCE which should be handled by trained staff only.
Handling Advice:	Avoid repeated freeze-thaw cycles.
Storage:	-20 °C
Storage Comment:	For short term use, store at 2-8°C up to 1 week. For long term storage, store at -20°C in small aliquots to prevent freeze-thaw cycles.



Western Blotting

**Image 1.** WB Suggested Anti-PIP4K2C Antibody Titration:  
1.0 ug/ml Positive Control: MCF7 Whole Cell PIP4K2C is supported by BioGPS gene expression data to be expressed in MCF7