

Datasheet for ABIN2790343  
**anti-SEZ6 antibody (C-Term)**[Go to Product page](#)

## 1 Image

## Overview

Quantity:	100 µL
Target:	SEZ6
Binding Specificity:	C-Term
Reactivity:	Human, Mouse, Rabbit, Rat, Cow, Dog, Horse
Host:	Rabbit
Clonality:	Polyclonal
Conjugate:	This SEZ6 antibody is un-conjugated
Application:	Western Blotting (WB)

## Product Details

Immunogen:	The immunogen is a synthetic peptide directed towards the C-terminal region of Human SEZ6
Sequence:	RAPKCLLEQL KPCHGLSAPE NGARSPEKQL HPAGATIHFS CAPGYVLKGQ
Predicted Reactivity:	Cow: 93%, Dog: 86%, Horse: 93%, Human: 100%, Mouse: 93%, Rabbit: 86%, Rat: 93%
Characteristics:	This is a rabbit polyclonal antibody against SEZ6. It was validated on Western Blot.
Purification:	Affinity Purified

## Target Details

Target:	SEZ6
Alternative Name:	SEZ6 ( <a href="#">SEZ6 Products</a> )
Background:	SEZ6 may play a role in cell-cell recognition and in neuronal membrane signaling. It seems to

## Target Details

be important for the achievement of the necessary balance between dendrite elongation and branching during the elaboration of a complex dendritic arbor. SEZ6 is involved in the development of appropriate excitatory synaptic connectivity.

Alias Symbols: -

Protein Interaction Partner: CHDH, TNK2,

Protein Size: 994

Molecular Weight: 105 kDa

Gene ID: 124925

NCBI Accession: [NM\\_178860](#), [NP\\_849191](#)

UniProt: [Q53EL9](#)

Pathways: [Synaptic Membrane](#)

## Application Details

Application Notes: Optimal working dilutions should be determined experimentally by the investigator.

Comment: Antigen size: 994 AA

Restrictions: For Research Use only

## Handling

Format: Liquid

Concentration: Lot specific

Buffer: Liquid. Purified antibody supplied in 1x PBS buffer with 0.09 % (w/v) sodium azide and 2 % sucrose.

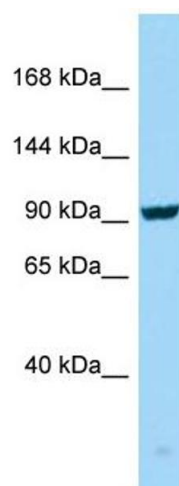
Preservative: Sodium azide

Precaution of Use: This product contains Sodium azide: a POISONOUS AND HAZARDOUS SUBSTANCE which should be handled by trained staff only.

Handling Advice: Avoid repeated freeze-thaw cycles.

Storage: -20 °C

Storage Comment: For short term use, store at 2-8°C up to 1 week. For long term storage, store at -20°C in small aliquots to prevent freeze-thaw cycles.



Western Blotting

**Image 1.** WB Suggested Anti-SEZ6 Antibody Titration: 1.0 ug/ml Positive Control: PANC1 Whole Cell