

Datasheet for ABIN2790346
anti-STARD10 antibody (C-Term)[Go to Product page](#)

1 Image

Overview

Quantity:	100 µL
Target:	STARD10
Binding Specificity:	C-Term
Reactivity:	Human, Mouse, Rat, Rabbit, Dog, Guinea Pig, Horse, Cow
Host:	Rabbit
Clonality:	Polyclonal
Conjugate:	This STARD10 antibody is un-conjugated
Application:	Western Blotting (WB)

Product Details

Immunogen:	The immunogen is a synthetic peptide directed towards the C-terminal region of Human STARD10
Sequence:	PEQSPLPSLA LSELSVQHAD SLENIDESAV AESREERMGG AGGEGSDDDT
Predicted Reactivity:	Cow: 79%, Dog: 93%, Guinea Pig: 93%, Horse: 86%, Human: 100%, Mouse: 93%, Rabbit: 100%, Rat: 93%
Characteristics:	This is a rabbit polyclonal antibody against STARD10. It was validated on Western Blot.
Purification:	Affinity Purified

Target Details

Target:	STARD10
---------	---------

Target Details

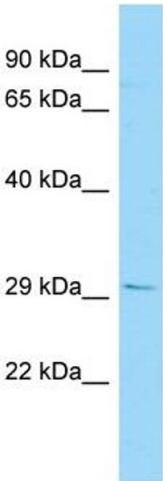
Alternative Name:	STARD10 (STARD10 Products)
Background:	STARD10 may play specific roles in sperm maturation or fertilization. Alias Symbols: CGI-52, MGC14401, NY-CO-28, PCTP2, SDCCAG28 Protein Interaction Partner: PRMT6, GRB2, APP, Protein Size: 291
Molecular Weight:	33 kDa
Gene ID:	10809
NCBI Accession:	NM_006645 , NP_006636
UniProt:	Q9Y365

Application Details

Application Notes:	Optimal working dilutions should be determined experimentally by the investigator.
Comment:	Antigen size: 291 AA
Restrictions:	For Research Use only

Handling

Format:	Liquid
Concentration:	Lot specific
Buffer:	Liquid. Purified antibody supplied in 1x PBS buffer with 0.09 % (w/v) sodium azide and 2 % sucrose.
Preservative:	Sodium azide
Precaution of Use:	This product contains Sodium azide: a POISONOUS AND HAZARDOUS SUBSTANCE which should be handled by trained staff only.
Handling Advice:	Avoid repeated freeze-thaw cycles.
Storage:	-20 °C
Storage Comment:	For short term use, store at 2-8°C up to 1 week. For long term storage, store at -20°C in small aliquots to prevent freeze-thaw cycles.



Western Blotting

Image 1. WB Suggested Anti-STARD10 Antibody Titration:
1.0 ug/ml Positive Control: 721_B Whole Cell