

Datasheet for ABIN2790347
anti-SYT8 antibody (C-Term)[Go to Product page](#)

1 Image

Overview

Quantity:	100 µL
Target:	SYT8
Binding Specificity:	C-Term
Reactivity:	Human, Mouse, Rat, Cow, Dog, Pig
Host:	Rabbit
Clonality:	Polyclonal
Conjugate:	This SYT8 antibody is un-conjugated
Application:	Western Blotting (WB)

Product Details

Immunogen:	The immunogen is a synthetic peptide directed towards the C-terminal region of human SYT8
Sequence:	LVSCLLCAAC CCCRRHRKKP RDKESVGLGS ARGTTTTHLV QPDVDGLESS
Predicted Reactivity:	Cow: 79%, Dog: 85%, Human: 100%, Mouse: 79%, Pig: 93%, Rat: 79%
Characteristics:	This is a rabbit polyclonal antibody against SYT8. It was validated on Western Blot.
Purification:	Affinity Purified

Target Details

Target:	SYT8
Alternative Name:	SYT8 (SYT8 Products)
Background:	This gene encodes a member of the synaptotagmin protein family. Synaptotagmins are

Target Details

membrane proteins that are important in neurotransmission and hormone secretion, both of which involve regulated exocytosis. Expression of the encoded protein in human pancreatic islets has been connected to activity of the promoter for the insulin gene, on the same chromosome several hundred kilobases away (PMID: 21336277 and 22928559). This association would link response to glucose to insulin secretion. Alternative splicing results in multiple transcript variants encoding different isoforms.

Protein Size: 310

Molecular Weight: 34 kDa

Gene ID: 90019

NCBI Accession: [NM_138567](#), [NP_612634](#)

UniProt: [Q8NBV8](#)

Application Details

Application Notes: Optimal working dilution should be determined by the investigator.

Restrictions: For Research Use only

Handling

Format: Liquid

Concentration: 1 mg/mL

Buffer: Liquid. Purified antibody supplied in 1x PBS buffer with 0.09 % (w/v) sodium azide and 2 % sucrose.

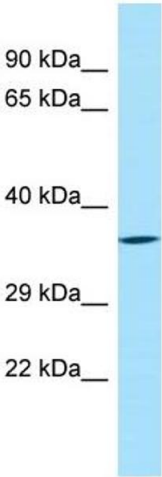
Preservative: Sodium azide

Precaution of Use: This product contains Sodium azide: a POISONOUS AND HAZARDOUS SUBSTANCE which should be handled by trained staff only.

Handling Advice: Avoid repeat freeze-thaw cycles.

Storage: -20 °C

Storage Comment: For short term use, store at 2-8°C up to 1 week. For long term storage, store at -20°C in small aliquots to prevent freeze-thaw cycles.



Western Blotting

Image 1.