

Datasheet for ABIN2790348

anti-UBE2Q2 antibody (Middle Region)



[Go to Product page](#)

1 Image

Overview

Quantity:	100 µL
Target:	UBE2Q2
Binding Specificity:	Middle Region
Reactivity:	Human, Mouse, Rat, Zebrafish (Danio rerio), Cow, Dog, Horse, Pig, Rabbit, Guinea Pig
Host:	Rabbit
Clonality:	Polyclonal
Conjugate:	This UBE2Q2 antibody is un-conjugated
Application:	Western Blotting (WB)

Product Details

Immunogen:	The immunogen is a synthetic peptide directed towards the middle region of Human UBE2Q2
Sequence:	EDIEDLDHYE MKEEEPISGK KSEDEGIEKE NLAILEKIRK TQRQDHLNGA
Predicted Reactivity:	Cow: 100%, Dog: 100%, Guinea Pig: 93%, Horse: 100%, Human: 100%, Mouse: 100%, Pig: 100%, Rabbit: 100%, Rat: 100%, Zebrafish: 92%
Characteristics:	This is a rabbit polyclonal antibody against UBE2Q2. It was validated on Western Blot.
Purification:	Affinity Purified

Target Details

Target:	UBE2Q2
Alternative Name:	UBE2Q2 (UBE2Q2 Products)

Target Details

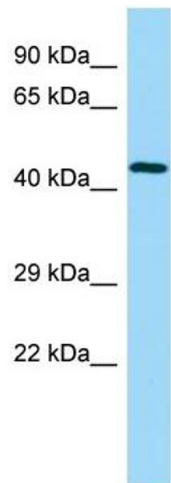
Background:	UBE2Q2 accepts ubiquitin from the E1 complex and catalyzes its covalent attachment to other proteins. In vitro UBE2Q2 catalyzes 'Lys-48'-linked polyubiquitination. Alias Symbols: DKFZp762C143 Protein Interaction Partner: UBE2Q2, WDR77, PRMT5, ARPC2, ARPC4, MYO1C, GSN, DBN1, CAPZB, ACTG1, ELAVL1, UBC, BIRC3, BIRC2, RNF111, PCGF2, Protein Size: 375
Molecular Weight:	43 kDa
Gene ID:	92912
NCBI Accession:	NM_173469 , NP_775740
UniProt:	Q8WVN8

Application Details

Application Notes:	Optimal working dilutions should be determined experimentally by the investigator.
Comment:	Antigen size: 375 AA
Restrictions:	For Research Use only

Handling

Format:	Liquid
Concentration:	Lot specific
Buffer:	Liquid. Purified antibody supplied in 1x PBS buffer with 0.09 % (w/v) sodium azide and 2 % sucrose.
Preservative:	Sodium azide
Precaution of Use:	This product contains Sodium azide: a POISONOUS AND HAZARDOUS SUBSTANCE which should be handled by trained staff only.
Handling Advice:	Avoid repeated freeze-thaw cycles.
Storage:	-20 °C
Storage Comment:	For short term use, store at 2-8°C up to 1 week. For long term storage, store at -20°C in small aliquots to prevent freeze-thaw cycles.



Western Blotting

Image 1. WB Suggested Anti-UBE2Q2 Antibody Titration:
1.0 ug/ml Positive Control: Fetal Heart