

Datasheet for ABIN2790354  
**anti-CEMP1 antibody (C-Term)**



[Go to Product page](#)

1 Image

## Overview

Quantity:	100 µL
Target:	CEMP1
Binding Specificity:	C-Term
Reactivity:	Human
Host:	Rabbit
Clonality:	Polyclonal
Conjugate:	This CEMP1 antibody is un-conjugated
Application:	Western Blotting (WB)

## Product Details

Immunogen:	The immunogen is a synthetic peptide directed towards the C-terminal region of Human CEMP1
Sequence:	RHFLNWALQQ REENSGRARR VPPVPRTAPV SKGEGSHPPQ NSNGEKVKTI
Predicted Reactivity:	Human: 100%
Characteristics:	This is a rabbit polyclonal antibody against CEMP1. It was validated on Western Blot.
Purification:	Affinity Purified

## Target Details

Target:	CEMP1
Alternative Name:	CEMP1 ( <a href="#">CEMP1 Products</a> )

## Target Details

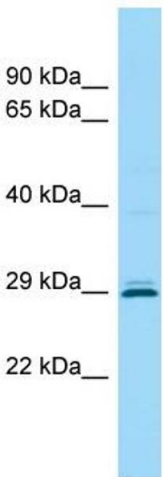
Background:	The function of this protein remains unknown. Alias Symbols: CP-23, CP23 Protein Interaction Partner: UBD, Protein Size: 247
Molecular Weight:	26 kDa
Gene ID:	752014
NCBI Accession:	<a href="#">NM_001048212</a> , <a href="#">NP_001041677</a>
UniProt:	<a href="#">Q6PRD7</a>

## Application Details

Application Notes:	Optimal working dilutions should be determined experimentally by the investigator.
Comment:	Antigen size: 247 AA
Restrictions:	For Research Use only

## Handling

Format:	Liquid
Concentration:	Lot specific
Buffer:	Liquid. Purified antibody supplied in 1x PBS buffer with 0.09 % (w/v) sodium azide and 2 % sucrose.
Preservative:	Sodium azide
Precaution of Use:	This product contains Sodium azide: a POISONOUS AND HAZARDOUS SUBSTANCE which should be handled by trained staff only.
Handling Advice:	Avoid repeated freeze-thaw cycles.
Storage:	-20 °C
Storage Comment:	For short term use, store at 2-8°C up to 1 week. For long term storage, store at -20°C in small aliquots to prevent freeze-thaw cycles.



Western Blotting

**Image 1.** WB Suggested Anti-CEMP1 Antibody Titration:  
1.0 ug/ml Positive Control: Hela Whole cell