

Datasheet for ABIN2790364  
**anti-LYPLAL1 antibody (C-Term)**



[Go to Product page](#)

1 Image

## Overview

Quantity:	100 µL
Target:	LYPLAL1
Binding Specificity:	C-Term
Reactivity:	Human, Rabbit, Dog, Horse, Guinea Pig, Rat
Host:	Rabbit
Clonality:	Polyclonal
Conjugate:	This LYPLAL1 antibody is un-conjugated
Application:	Western Blotting (WB)

## Product Details

Immunogen:	The immunogen is a synthetic peptide directed towards the C-terminal region of Human LYPLAL1
Sequence:	EETNSMLKSL GVTTKFHSFP NVYHELKTE LDILKLWILT KLPGEMEKQK
Predicted Reactivity:	Dog: 82%, Guinea Pig: 100%, Horse: 85%, Human: 100%, Rabbit: 92%, Rat: 85%
Characteristics:	This is a rabbit polyclonal antibody against LYPLAL1. It was validated on Western Blot.
Purification:	Affinity Purified

## Target Details

Target:	LYPLAL1
Alternative Name:	LYPLAL1 ( <a href="#">LYPLAL1 Products</a> )

## Target Details

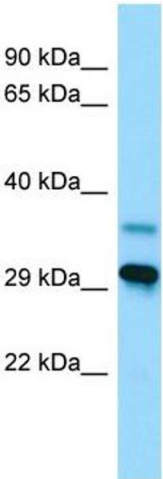
Background:	LYPLAL1 does not exhibit phospholipase nor triacylglycerol lipase activity. It is able to hydrolyze only short chain substrates due to its shallow active site. Alias Symbols: FLJ99730, KIAA1238 Protein Interaction Partner: UBD, UBC, Protein Size: 237
Molecular Weight:	26 kDa
Gene ID:	127018
NCBI Accession:	<a href="#">NM_138794</a> , <a href="#">NP_620149</a>
UniProt:	<a href="#">Q5VWZ2</a>

## Application Details

Application Notes:	Optimal working dilutions should be determined experimentally by the investigator.
Comment:	Antigen size: 237 AA
Restrictions:	For Research Use only

## Handling

Format:	Liquid
Concentration:	Lot specific
Buffer:	Liquid. Purified antibody supplied in 1x PBS buffer with 0.09 % (w/v) sodium azide and 2 % sucrose.
Preservative:	Sodium azide
Precaution of Use:	This product contains Sodium azide: a POISONOUS AND HAZARDOUS SUBSTANCE which should be handled by trained staff only.
Handling Advice:	Avoid repeated freeze-thaw cycles.
Storage:	-20 °C
Storage Comment:	For short term use, store at 2-8°C up to 1 week. For long term storage, store at -20°C in small aliquots to prevent freeze-thaw cycles.



Western Blotting

**Image 1.** WB Suggested Anti-LYPLAL1 Antibody Titration:  
1.0 ug/ml Positive Control: Placenta