

Datasheet for ABIN2790371
anti-RAB6B antibody (C-Term)



[Go to Product page](#)

1 Image

Overview

Quantity:	100 µL
Target:	RAB6B
Binding Specificity:	C-Term
Reactivity:	Human, Mouse, Rat, Cow, Dog, Guinea Pig, Horse, Rabbit, Zebrafish (Danio rerio)
Host:	Rabbit
Clonality:	Polyclonal
Conjugate:	This RAB6B antibody is un-conjugated
Application:	Western Blotting (WB)

Product Details

Immunogen:	The immunogen is a synthetic peptide directed towards the C-terminal region of Mouse Rab6b
Sequence:	KTGYNVKQLF RRVASALPGM ENVQEKSKG MIDIKLDPKQ EPPASEGGCS
Predicted Reactivity:	Cow: 100%, Dog: 100%, Guinea Pig: 100%, Horse: 100%, Human: 100%, Mouse: 100%, Rabbit: 100%, Rat: 100%, Zebrafish: 86%
Characteristics:	This is a rabbit polyclonal antibody against Rab6b. It was validated on Western Blot.
Purification:	Affinity Purified

Target Details

Target:	RAB6B
Alternative Name:	Rab6b (RAB6B Products)

Target Details

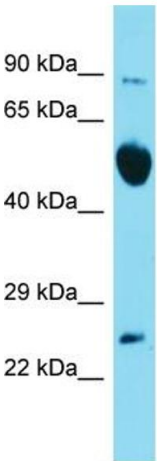
Background:	<p>Rab6b seems to have a role in retrograde membrane traffic at the level of the Golgi complex. It may function in retrograde transport in neuronal cells.</p> <p>Alias Symbols: 9630015C03, AI844641, C330006L04Rik, D9Bwg0185e</p> <p>Protein Interaction Partner: CALM1, Lmna, TGFBR1, BMPR1B, ACVR1, Gdi2, Gdi1, Erc1,</p> <p>Protein Size: 208</p>
Molecular Weight:	22 kDa
Gene ID:	270192
NCBI Accession:	NM_173781 , NP_776142
UniProt:	P61294

Application Details

Application Notes:	Optimal working dilution should be determined by the investigator.
Restrictions:	For Research Use only

Handling

Format:	Liquid
Concentration:	1 mg/mL
Buffer:	Liquid. Purified antibody supplied in 1x PBS buffer with 0.09 % (w/v) sodium azide and 2 % sucrose.
Preservative:	Sodium azide
Precaution of Use:	This product contains Sodium azide: a POISONOUS AND HAZARDOUS SUBSTANCE which should be handled by trained staff only.
Handling Advice:	Avoid repeat freeze-thaw cycles.
Storage:	-20 °C
Storage Comment:	For short term use, store at 2-8°C up to 1 week. For long term storage, store at -20°C in small aliquots to prevent freeze-thaw cycles.



Host: Rabbit
Target Name: Rab6b
Sample Tissue: Mouse Brain Lysate
Antibody Dilution: 1.0µg/ml

Western Blotting

Image 1. Host: Rabbit Target Name: Rab6b Sample Type: Mouse Brain lysates Antibody Dilution: 1.0ug/ml