

Datasheet for ABIN2790373
anti-RIN2 antibody (N-Term)[Go to Product page](#)

1 Image

Overview

Quantity:	100 µL
Target:	RIN2
Binding Specificity:	N-Term
Reactivity:	Human, Mouse, Rat, Cow, Horse, Pig, Dog
Host:	Rabbit
Clonality:	Polyclonal
Conjugate:	This RIN2 antibody is un-conjugated
Application:	Western Blotting (WB)

Product Details

Immunogen:	The immunogen is a synthetic peptide directed towards the N-terminal region of human RIN2
Sequence:	RTDVNLENGL EPAETHSMVR HKDGGYSEEE DVKTCARDSG YDSLNRLSI
Predicted Reactivity:	Cow: 80%, Dog: 80%, Horse: 80%, Human: 100%, Mouse: 83%, Pig: 80%, Rat: 83%
Characteristics:	This is a rabbit polyclonal antibody against RIN2. It was validated on Western Blot.
Purification:	Affinity Purified

Target Details

Target:	RIN2
Alternative Name:	RIN2 (RIN2 Products)
Background:	The RAB5 protein is a small GTPase involved in membrane trafficking in the early endocytic

Target Details

pathway. The protein encoded by this gene binds the GTP-bound form of the RAB5 protein preferentially over the GDP-bound form, and functions as a guanine nucleotide exchange factor for RAB5. The encoded protein is found primarily as a tetramer in the cytoplasm and does not bind other members of the RAB family. Mutations in this gene cause macrocephaly alopecia cutis laxa and scoliosis (MACS) syndrome, an elastic tissue disorder, as well as the related connective tissue disorder, RIN2 syndrome. Alternative splicing results in multiple transcript variants.

Alias Symbols: MACS, RASSF4

Protein Size: 462

Molecular Weight: 50 kDa

Gene ID: 54453

NCBI Accession: [NM_001242581](#), [NP_001229510](#)

UniProt: [Q8WYP3](#)

Application Details

Application Notes: Optimal working dilution should be determined by the investigator.

Restrictions: For Research Use only

Handling

Format: Liquid

Concentration: 1 mg/mL

Buffer: Liquid. Purified antibody supplied in 1x PBS buffer with 0.09 % (w/v) sodium azide and 2 % sucrose.

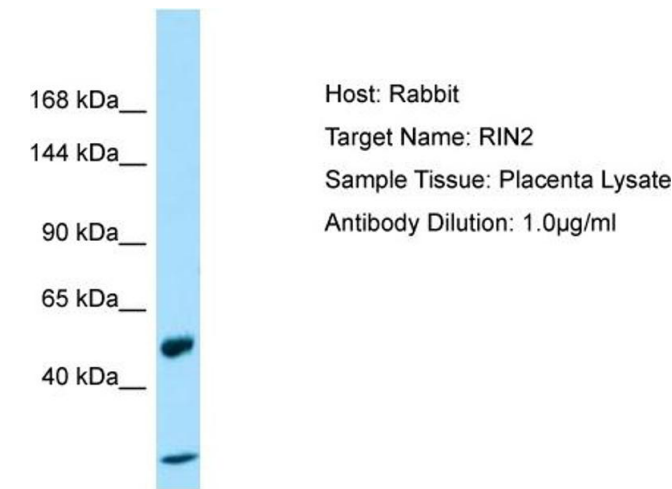
Preservative: Sodium azide

Precaution of Use: This product contains Sodium azide: a POISONOUS AND HAZARDOUS SUBSTANCE which should be handled by trained staff only.

Handling Advice: Avoid repeat freeze-thaw cycles.

Storage: -20 °C

Storage Comment: For short term use, store at 2-8°C up to 1 week. For long term storage, store at -20°C in small aliquots to prevent freeze-thaw cycles.



Host: Rabbit
Target Name: RIN2
Sample Tissue: Placenta Lysate
Antibody Dilution: 1.0µg/ml

Western Blotting

Image 1. Host: Rabbit Target Name: RIN2 Sample Type: Placenta lysates Antibody Dilution: 1.0ug/ml