



[Go to Product page](#)

Datasheet for ABIN2790382
anti-SSFA2 antibody (C-Term)

1 Image

Overview

Quantity:	100 µL
Target:	SSFA2
Binding Specificity:	C-Term
Reactivity:	Human, Cow, Pig, Dog, Horse
Host:	Rabbit
Clonality:	Polyclonal
Conjugate:	This SSFA2 antibody is un-conjugated
Application:	Western Blotting (WB)

Product Details

Immunogen:	The immunogen is a synthetic peptide directed towards the C-terminal region of human SSFA2
Sequence:	VDAAEGAPEV VGPKEVEEG HGKLPMPAA EEMHKNVEQD ELQQVIREIK
Predicted Reactivity:	Cow: 85%, Dog: 92%, Horse: 91%, Human: 100%, Pig: 85%
Characteristics:	This is a rabbit polyclonal antibody against SSFA2. It was validated on Western Blot.
Purification:	Affinity Purified

Target Details

Target:	SSFA2
Alternative Name:	SSFA2 (SSFA2 Products)
Background:	Alias Symbols: CS1, CS-1, KRAP, SPAG13

Target Details

Protein Size: 768

Molecular Weight: 84 kDa

Gene ID: 6744

NCBI Accession: [XM_011511702](#), [XP_011510004](#)

UniProt: [E7EUL7](#)

Application Details

Application Notes: Optimal working dilution should be determined by the investigator.

Restrictions: For Research Use only

Handling

Format: Liquid

Concentration: 1 mg/mL

Buffer: Liquid. Purified antibody supplied in 1x PBS buffer with 0.09 % (w/v) sodium azide and 2 % sucrose.

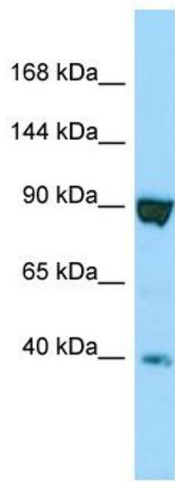
Preservative: Sodium azide

Precaution of Use: This product contains Sodium azide: a POISONOUS AND HAZARDOUS SUBSTANCE which should be handled by trained staff only.

Handling Advice: Avoid repeat freeze-thaw cycles.

Storage: -20 °C

Storage Comment: For short term use, store at 2-8°C up to 1 week. For long term storage, store at -20°C in small aliquots to prevent freeze-thaw cycles.



Western Blotting

Image 1.