



[Go to Product page](#)

Datasheet for ABIN2790385  
**anti-SYNRG antibody (N-Term)**

1 Image

Overview

Quantity:	100 µL
Target:	SYNRG
Binding Specificity:	N-Term
Reactivity:	Human, Pig, Rabbit, Cow, Horse, Dog, Guinea Pig, Mouse, Rat, Zebrafish (Danio rerio)
Host:	Rabbit
Clonality:	Polyclonal
Conjugate:	This SYNRG antibody is un-conjugated
Application:	Western Blotting (WB)

Product Details

Immunogen:	The immunogen is a synthetic peptide directed towards the N-terminal region of Human SYNRG
Sequence:	QQKLEEEERK RRQFEEQKQK LRLSSVKPK TGEKSRDDAL EAIKGNLDGF
Predicted Reactivity:	Cow: 100%, Dog: 100%, Guinea Pig: 93%, Horse: 100%, Human: 100%, Mouse: 93%, Pig: 100%, Rabbit: 100%, Rat: 100%, Zebrafish: 100%
Characteristics:	This is a rabbit polyclonal antibody against SYNRG. It was validated on Western Blot.
Purification:	Affinity Purified

Target Details

Target:	SYNRG
---------	-------

## Target Details

---

Alternative Name:	SYNRG ( <a href="#">SYNRG Products</a> )
Background:	<p>This gene encodes a protein that interacts with the gamma subunit of AP1 clathrin-adaptor complex. The AP1 complex is located at the trans-Golgi network and associates specific proteins with clathrin-coated vesicles. This encoded protein may act to connect the AP1 complex to other proteins. Alternatively spliced transcript variants that encode different isoforms have been described for this gene.</p> <p>Alias Symbols: AP1GBP1, FLJ34482, MGC104959, SYNG</p> <p>Protein Interaction Partner: APPBP2, UBC, GGA1, GGA2, AP1G1, GGA3, CCDC91, SCAMP1, AP1G2,</p> <p>Protein Size: 1108</p>
Molecular Weight:	119 kDa
Gene ID:	11276
NCBI Accession:	<a href="#">NM_001163547</a> , <a href="#">NP_001157019</a>
UniProt:	<a href="#">B7ZKZ2</a>

## Application Details

---

Application Notes:	Optimal working dilutions should be determined experimentally by the investigator.
Comment:	Antigen size: 1108 AA
Restrictions:	For Research Use only

## Handling

---

Format:	Liquid
Concentration:	Lot specific
Buffer:	Liquid. Purified antibody supplied in 1x PBS buffer with 0.09 % (w/v) sodium azide and 2 % sucrose.
Preservative:	Sodium azide
Precaution of Use:	This product contains Sodium azide: a POISONOUS AND HAZARDOUS SUBSTANCE which should be handled by trained staff only.
Handling Advice:	Avoid repeated freeze-thaw cycles.
Storage:	-20 °C

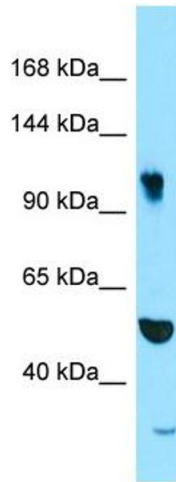
## Handling

---

Storage Comment: For short term use, store at 2-8°C up to 1 week. For long term storage, store at -20°C in small aliquots to prevent freeze-thaw cycles.

## Images

---



### Western Blotting

**Image 1.** WB Suggested Anti-SYNRG Antibody Titration: 1.0 ug/ml Positive Control: PANC1 Whole Cell