

Datasheet for ABIN2790390  
**anti-WHAMM antibody (C-Term)**[Go to Product page](#)

## 1 Image

## Overview

Quantity:	100 µL
Target:	WHAMM
Binding Specificity:	C-Term
Reactivity:	Human, Dog, Horse, Pig, Rat
Host:	Rabbit
Clonality:	Polyclonal
Conjugate:	This WHAMM antibody is un-conjugated
Application:	Western Blotting (WB)

## Product Details

Immunogen:	The immunogen is a synthetic peptide directed towards the C-terminal region of Human WHAMM
Sequence:	SEAGNVKSPK CQNCHGNIPV QVFVPVGDQT HSKSSEELSL PPPPPPPPPP
Predicted Reactivity:	Dog: 86%, Horse: 93%, Human: 100%, Pig: 86%, Rat: 85%
Characteristics:	This is a rabbit polyclonal antibody against WHAMM. It was validated on Western Blot.
Purification:	Affinity Purified

## Target Details

Target:	WHAMM
Alternative Name:	WHAMM ( <a href="#">WHAMM Products</a> )

## Target Details

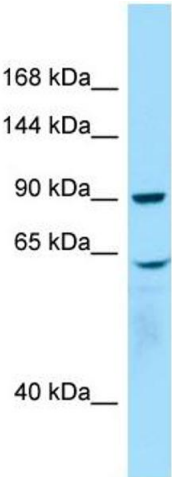
Background:	WHAMM acts as a nucleation-promoting factor (NPF) that stimulates Arp2/3-mediated actin polymerization both at the Golgi apparatus and along tubular membranes. WHAMM is involved as a regulator of Golgi positioning and morphology. WHAMM participates in vesicle transport between the reticulum endoplasmic and the Golgi complex.  Alias Symbols: KIAA1971, WHDC1  Protein Size: 809
Molecular Weight:	91 kDa
Gene ID:	123720
NCBI Accession:	<a href="#">NM_001080435</a> , <a href="#">NP_001073904</a>
UniProt:	<a href="#">Q8TF30</a>

## Application Details

Application Notes:	Optimal working dilutions should be determined experimentally by the investigator.
Comment:	Antigen size: 809 AA
Restrictions:	For Research Use only

## Handling

Format:	Liquid
Concentration:	Lot specific
Buffer:	Liquid. Purified antibody supplied in 1x PBS buffer with 0.09 % (w/v) sodium azide and 2 % sucrose.
Preservative:	Sodium azide
Precaution of Use:	This product contains Sodium azide: a POISONOUS AND HAZARDOUS SUBSTANCE which should be handled by trained staff only.
Handling Advice:	Avoid repeated freeze-thaw cycles.
Storage:	-20 °C
Storage Comment:	For short term use, store at 2-8°C up to 1 week. For long term storage, store at -20°C in small aliquots to prevent freeze-thaw cycles.



Western Blotting

**Image 1.** WB Suggested Anti-WHAMM Antibody Titration:  
1.0 ug/ml Positive Control: Placenta