



[Go to Product page](#)

Datasheet for ABIN2790401  
**anti-FLVCR2 antibody (C-Term)**

1 Image

Overview

Quantity:	100 µL
Target:	FLVCR2
Binding Specificity:	C-Term
Reactivity:	Human, Dog, Horse, Rabbit, Pig
Host:	Rabbit
Clonality:	Polyclonal
Conjugate:	This FLVCR2 antibody is un-conjugated
Application:	Western Blotting (WB)

Product Details

Immunogen:	The immunogen is a synthetic peptide directed towards the C-terminal region of Human FLVCR2
Sequence:	CVFLTLGAAL TAFIKADLRR QKANKETLEN KLQEEEEESN TSKVPTAVSE
Predicted Reactivity:	Dog: 93%, Horse: 86%, Human: 100%, Pig: 93%, Rabbit: 79%
Characteristics:	This is a rabbit polyclonal antibody against FLVCR2. It was validated on Western Blot.
Purification:	Affinity Purified

Target Details

Target:	FLVCR2
Alternative Name:	FLVCR2 ( <a href="#">FLVCR2 Products</a> )

## Target Details

---

**Background:** This gene encodes a member of the major facilitator superfamily. The encoded transmembrane protein is a calcium transporter. Unlike the related protein feline leukemia virus subgroup C receptor 1, the protein encoded by this locus does not bind to feline leukemia virus subgroup C envelope protein. The encoded protein may play a role in development of brain vascular endothelial cells, as mutations at this locus have been associated with proliferative vasculopathy and hydranencephaly-hydrocephaly syndrome. Alternatively spliced transcript variants have been described.

Alias Symbols: C14orf58, CCT, FLJ20371, FLVCRL14q, EPV, PVHH, MFSD7C

Protein Size: 321

---

**Molecular Weight:** 35 kDa

---

**Gene ID:** 55640

---

**NCBI Accession:** [NM\\_001195283](#), [NP\\_001182212](#)

---

**UniProt:** [Q9UPI3](#)

## Application Details

---

**Application Notes:** Optimal working dilutions should be determined experimentally by the investigator.

---

**Comment:** Antigen size: 321 AA

---

**Restrictions:** For Research Use only

## Handling

---

**Format:** Liquid

---

**Concentration:** Lot specific

---

**Buffer:** Liquid. Purified antibody supplied in 1x PBS buffer with 0.09 % (w/v) sodium azide and 2 % sucrose.

---

**Preservative:** Sodium azide

---

**Precaution of Use:** This product contains Sodium azide: a POISONOUS AND HAZARDOUS SUBSTANCE which should be handled by trained staff only.

---

**Handling Advice:** Avoid repeated freeze-thaw cycles.

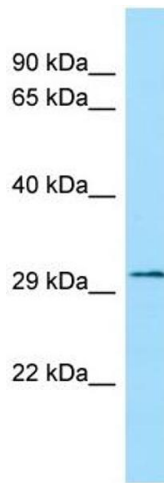
---

**Storage:** -20 °C

---

**Storage Comment:** For short term use, store at 2-8°C up to 1 week. For long term storage, store at -20°C in small

aliquots to prevent freeze-thaw cycles.



#### Western Blotting

**Image 1.** WB Suggested Anti-FLVCR2 Antibody Titration: 1.0 ug/ml Positive Control: HCT15 Whole Cell