



[Go to Product page](#)

Datasheet for ABIN2790402
anti-FLVCR2 antibody (C-Term)

1 Image

Overview

| | |
|----------------------|---|
| Quantity: | 100 µL |
| Target: | FLVCR2 |
| Binding Specificity: | C-Term |
| Reactivity: | Human, Mouse, Dog, Horse, Rabbit, Cow, Guinea Pig, Rat, Zebrafish (Danio rerio) |
| Host: | Rabbit |
| Clonality: | Polyclonal |
| Conjugate: | This FLVCR2 antibody is un-conjugated |
| Application: | Western Blotting (WB) |

Product Details

| | |
|-----------------------|--|
| Immunogen: | The immunogen is a synthetic peptide directed towards the C-terminal region of Human FLVCR2 |
| Sequence: | TLLNRMVIWH YPGEEVNAGR IGLTIVIAGM LGAVISGIWL DRSKTYKETT |
| Predicted Reactivity: | Cow: 93%, Dog: 100%, Guinea Pig: 93%, Horse: 86%, Human: 100%, Mouse: 93%, Rabbit: 93%, Rat: 93%, Zebrafish: 93% |
| Characteristics: | This is a rabbit polyclonal antibody against FLVCR2. It was validated on Western Blot. |
| Purification: | Affinity Purified |

Target Details

| | |
|---------|--------|
| Target: | FLVCR2 |
|---------|--------|

Target Details

Alternative Name: [FLVCR2 \(FLVCR2 Products\)](#)

Background: This gene encodes a member of the major facilitator superfamily. The encoded transmembrane protein is a calcium transporter. Unlike the related protein feline leukemia virus subgroup C receptor 1, the protein encoded by this locus does not bind to feline leukemia virus subgroup C envelope protein. The encoded protein may play a role in development of brain vascular endothelial cells, as mutations at this locus have been associated with proliferative vasculopathy and hydranencephaly-hydrocephaly syndrome. Alternatively spliced transcript variants have been described.

Alias Symbols: C14orf58, CCT, FLJ20371, FLVCRL14q, EPV, PVHH, MFSD7C

Protein Size: 526

Molecular Weight: 57 kDa

Gene ID: 55640

NCBI Accession: [NM_017791](#), [NP_060261](#)

UniProt: [Q9UPI3](#)

Application Details

Application Notes: Optimal working dilutions should be determined experimentally by the investigator.

Comment: Antigen size: 526 AA

Restrictions: For Research Use only

Handling

Format: Liquid

Concentration: Lot specific

Buffer: Liquid. Purified antibody supplied in 1x PBS buffer with 0.09 % (w/v) sodium azide and 2 % sucrose.

Preservative: Sodium azide

Precaution of Use: This product contains Sodium azide: a POISONOUS AND HAZARDOUS SUBSTANCE which should be handled by trained staff only.

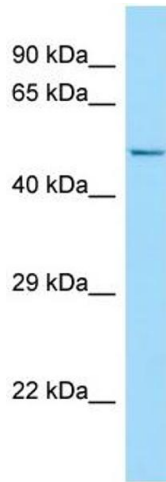
Handling Advice: Avoid repeated freeze-thaw cycles.

Storage: -20 °C

Handling

Storage Comment: For short term use, store at 2-8°C up to 1 week. For long term storage, store at -20°C in small aliquots to prevent freeze-thaw cycles.

Images



Western Blotting

Image 1. WB Suggested Anti-FLVCR2 Antibody Titration: 1.0 ug/ml Positive Control: HT1080 Whole Cell