

Datasheet for ABIN2790403  
**anti-GALK2 antibody (C-Term)**



[Go to Product page](#)

1 Image

## Overview

Quantity:	100 µL
Target:	GALK2
Binding Specificity:	C-Term
Reactivity:	Human, Cow, Horse, Pig, Rabbit
Host:	Rabbit
Clonality:	Polyclonal
Conjugate:	This GALK2 antibody is un-conjugated
Application:	Western Blotting (WB)

## Product Details

Immunogen:	The immunogen is a synthetic peptide directed towards the C-terminal region of Human GALK2
Sequence:	TVSMVPADKL PSFLANVHKA YYQRSDGSLA PEKQSLFATK PGGGALVLE
Predicted Reactivity:	Cow: 86%, Horse: 93%, Human: 100%, Pig: 79%, Rabbit: 79%
Characteristics:	This is a rabbit polyclonal antibody against GALK2. It was validated on Western Blot.
Purification:	Affinity Purified

## Target Details

Target:	GALK2
Alternative Name:	GALK2 ( <a href="#">GALK2 Products</a> )
Background:	This gene encodes a highly efficient N-acetylgalactosamine (GalNAc) kinase, which has

## Target Details

galactokinase activity when galactose is present at high concentrations. Two alternatively spliced transcript variants encoding different isoforms have been found for this gene.

Alias Symbols: GK2, MGC1745

Protein Interaction Partner: UBC,

Protein Size: 458

Molecular Weight: 50 kDa

Gene ID: 2585

NCBI Accession: [NM\\_002044](#), [NP\\_002035](#)

UniProt: [Q01415](#)

## Application Details

Application Notes: Optimal working dilutions should be determined experimentally by the investigator.

Comment: Antigen size: 458 AA

Restrictions: For Research Use only

## Handling

Format: Liquid

Concentration: Lot specific

Buffer: Liquid. Purified antibody supplied in 1x PBS buffer with 0.09 % (w/v) sodium azide and 2 % sucrose.

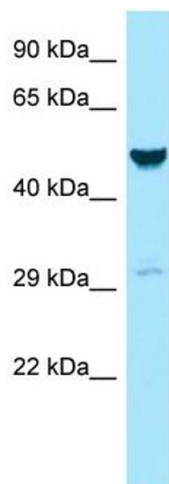
Preservative: Sodium azide

Precaution of Use: This product contains Sodium azide: a POISONOUS AND HAZARDOUS SUBSTANCE which should be handled by trained staff only.

Handling Advice: Avoid repeated freeze-thaw cycles.

Storage: -20 °C

Storage Comment: For short term use, store at 2-8°C up to 1 week. For long term storage, store at -20°C in small aliquots to prevent freeze-thaw cycles.



Western Blotting

**Image 1.** WB Suggested Anti-GALK2 Antibody Titration: 1.0 ug/ml Positive Control: MCF7 Whole Cell GALK2 is supported by BioGPS gene expression data to be expressed in MCF7