

Datasheet for ABIN2790405
anti-GGNBP1 antibody (N-Term)



[Go to Product page](#)

1 Image

Overview

Quantity:	100 µL
Target:	GGNBP1
Binding Specificity:	N-Term
Reactivity:	Human, Horse, Cow, Rat
Host:	Rabbit
Clonality:	Polyclonal
Conjugate:	This GGNBP1 antibody is un-conjugated
Application:	Western Blotting (WB)

Product Details

Immunogen:	The immunogen is a synthetic peptide directed towards the N-terminal region of Human GGNBP1
Sequence:	EEDSSFKLCV PGIVALQSPP NKAFRSTDV GFLESELKKL LGMQQESRLW
Predicted Reactivity:	Cow: 86%, Horse: 79%, Human: 100%, Rat: 79%
Characteristics:	This is a rabbit polyclonal antibody against GGNBP1. It was validated on Western Blot.
Purification:	Affinity Purified

Target Details

Target:	GGNBP1
Alternative Name:	GGNBP1 (GGNBP1 Products)

Target Details

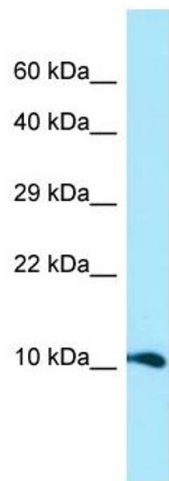
Background:	<p>This gene is the ortholog of the mouse gametogenetin-binding protein 1 gene. In human, the open reading frame is disrupted by a nonsense mutation after 8-aa, consequently, this gene is currently considered to be a unitary pseudogene in human even though it is functional in other mammals.</p> <p>Protein Interaction Partner: EIF2AK4,</p> <p>Protein Size: 88</p>
Molecular Weight:	10 kDa
Gene ID:	449520
NCBI Accession:	NR_028361

Application Details

Application Notes:	Optimal working dilutions should be determined experimentally by the investigator.
Comment:	Antigen size: 88 AA
Restrictions:	For Research Use only

Handling

Format:	Liquid
Concentration:	Lot specific
Buffer:	Liquid. Purified antibody supplied in 1x PBS buffer with 0.09 % (w/v) sodium azide and 2 % sucrose.
Preservative:	Sodium azide
Precaution of Use:	This product contains Sodium azide: a POISONOUS AND HAZARDOUS SUBSTANCE which should be handled by trained staff only.
Handling Advice:	Avoid repeated freeze-thaw cycles.
Storage:	-20 °C
Storage Comment:	For short term use, store at 2-8°C up to 1 week. For long term storage, store at -20°C in small aliquots to prevent freeze-thaw cycles.



Western Blotting

Image 1. WB Suggested Anti-GGNBP1 Antibody Titration:
1.0 ug/ml Positive Control: Placenta