

Datasheet for ABIN2790415
anti-KIF21B antibody (N-Term)[Go to Product page](#)

1 Image

Overview

Quantity:	100 µL
Target:	KIF21B
Binding Specificity:	N-Term
Reactivity:	Human, Mouse, Rat, Cow, Dog, Guinea Pig, Horse, Rabbit, Zebrafish (Danio rerio)
Host:	Rabbit
Clonality:	Polyclonal
Conjugate:	This KIF21B antibody is un-conjugated
Application:	Western Blotting (WB)

Product Details

Immunogen:	The immunogen is a synthetic peptide directed towards the N-terminal region of Human KIF21B
Sequence:	SSEYETLTAK FHFVDLAGSE RLKRTGATGE RAKEGISINC GLLALGNVIS
Predicted Reactivity:	Cow: 100%, Dog: 100%, Guinea Pig: 100%, Horse: 100%, Human: 100%, Mouse: 100%, Rabbit: 100%, Rat: 100%, Zebrafish: 100%
Characteristics:	This is a rabbit polyclonal antibody against KIF21B. It was validated on Western Blot.
Purification:	Affinity Purified

Target Details

Target:	KIF21B
---------	--------

Target Details

Alternative Name:	KIF21B (KIF21B Products)
Background:	<p>This gene encodes a member of the kinesin superfamily. Kinesins are ATP-dependent microtubule-based motor proteins that are involved in the intracellular transport of membranous organelles. Single nucleotide polymorphisms in this gene are associated with inflammatory bowel disease and multiple sclerosis. Alternatively spliced transcript variants encoding multiple isoforms have been observed for this gene.</p> <p>Alias Symbols: FLJ16314</p> <p>Protein Interaction Partner: TRIM3, rev, TK1, UBC,</p> <p>Protein Size: 1624</p>
Molecular Weight:	181 kDa
Gene ID:	23046
NCBI Accession:	NM_017596 , NP_060066
UniProt:	O75037

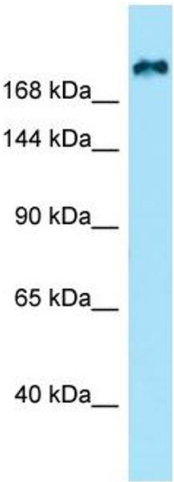
Application Details

Application Notes:	Optimal working dilutions should be determined experimentally by the investigator.
Comment:	Antigen size: 1624 AA
Restrictions:	For Research Use only

Handling

Format:	Liquid
Concentration:	Lot specific
Buffer:	Liquid. Purified antibody supplied in 1x PBS buffer with 0.09 % (w/v) sodium azide and 2 % sucrose.
Preservative:	Sodium azide
Precaution of Use:	This product contains Sodium azide: a POISONOUS AND HAZARDOUS SUBSTANCE which should be handled by trained staff only.
Handling Advice:	Avoid repeated freeze-thaw cycles.
Storage:	-20 °C
Storage Comment:	For short term use, store at 2-8°C up to 1 week. For long term storage, store at -20°C in small

aliquots to prevent freeze-thaw cycles.



Western Blotting

Image 1. WB Suggested Anti-KIF21B Antibody Titration: 1.0 ug/ml Positive Control: Hela Whole Cell