

Datasheet for ABIN2790419  
**anti-Keratin 85 antibody (C-Term)**[Go to Product page](#)

## 1 Image

## Overview

Quantity:	100 µL
Target:	Keratin 85 (KRT85)
Binding Specificity:	C-Term
Reactivity:	Human, Mouse, Horse, Pig, Rabbit, Cow, Dog, Rat, Sheep
Host:	Rabbit
Clonality:	Polyclonal
Conjugate:	This Keratin 85 antibody is un-conjugated
Application:	Western Blotting (WB)

## Product Details

Immunogen:	The immunogen is a synthetic peptide directed towards the C-terminal region of Human KRT85
Sequence:	DVASRSRAEA ESWYRSKCEE MKATVIRHGE TLRRTKEEIN ELNRM IQRLT
Predicted Reactivity:	Cow: 100%, Dog: 100%, Horse: 100%, Human: 100%, Mouse: 93%, Pig: 100%, Rabbit: 100%, Rat: 93%, Sheep: 100%
Characteristics:	This is a rabbit polyclonal antibody against KRT85. It was validated on Western Blot.
Purification:	Affinity Purified

## Target Details

Target:	Keratin 85 (KRT85)
Alternative Name:	KRT85 ( <a href="#">KRT85 Products</a> )

## Target Details

Background:	<p>The protein encoded by this gene is a member of the keratin gene family. As a type II hair keratin, it is a basic protein which heterodimerizes with type I keratins to form hair and nails. The type II hair keratins are clustered in a region of chromosome 12q13 and are grouped into two distinct subfamilies based on structure similarity. One subfamily, consisting of KRTHB1, KRTHB3, and KRTHB6, is highly related. The other less-related subfamily includes KRTHB2, KRTHB4, and KRTHB5.</p> <p>Alias Symbols: HB5, Hb-5, KRTHB5, hHb5</p> <p>Protein Interaction Partner: UBC, GRB2, EPS15, CUL3, CUL4B, ATG10, ATG3, MLST8, OTUD4, USPL1, USP15, USP8, ALOX12, LYAR, PLEKHB2, TWF2, YWHAG, DLG3, CDC25B, CDC20,</p> <p>Protein Size: 507</p>
-------------	--

Molecular Weight:	55 kDa
-------------------	--------

Gene ID:	3891
----------	------

NCBI Accession:	<a href="#">NM_002283</a> , <a href="#">NP_002274</a>
-----------------	---

UniProt:	<a href="#">P78386</a>
----------	------------------------

## Application Details

Application Notes:	Optimal working dilution should be determined by the investigator.
--------------------	--

Restrictions:	For Research Use only
---------------	-----------------------

## Handling

Format:	Liquid
---------	--------

Concentration:	1 mg/mL
----------------	---------

Buffer:	Liquid. Purified antibody supplied in 1x PBS buffer with 0.09 % (w/v) sodium azide and 2 % sucrose.
---------	---

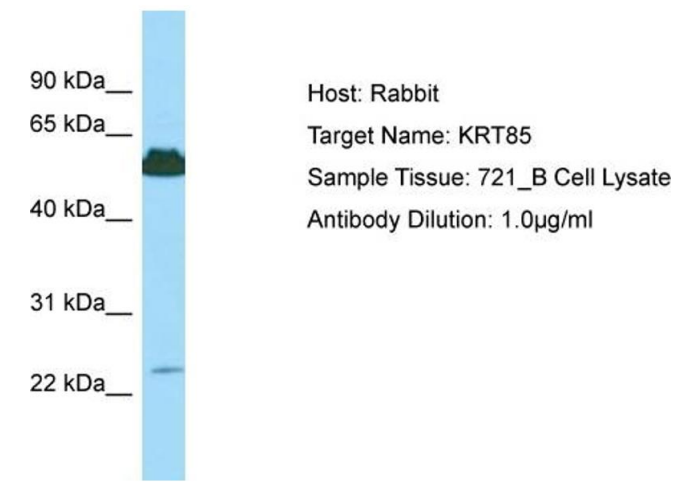
Preservative:	Sodium azide
---------------	--------------

Precaution of Use:	This product contains Sodium azide: a POISONOUS AND HAZARDOUS SUBSTANCE which should be handled by trained staff only.
--------------------	--

Handling Advice:	Avoid repeat freeze-thaw cycles.
------------------	----------------------------------

Storage:	-20 °C
----------	--------

Storage Comment:	For short term use, store at 2-8°C up to 1 week. For long term storage, store at -20°C in small aliquots to prevent freeze-thaw cycles.
------------------	---



**Western Blotting**

**Image 1.** Host: Rabbit Target Name: KRT85 Sample Type: 721\_B Whole Cell lysates Antibody Dilution: 1.0ug/ml