

Datasheet for ABIN2790438
anti-RAB7L1 antibody (N-Term)[Go to Product page](#)

1 Image

Overview

Quantity:	100 µL
Target:	RAB7L1
Binding Specificity:	N-Term
Reactivity:	Human, Mouse, Rat, Rabbit, Guinea Pig, Cow, Horse, Dog, Pig
Host:	Rabbit
Clonality:	Polyclonal
Conjugate:	This RAB7L1 antibody is un-conjugated
Application:	Western Blotting (WB)

Product Details

Immunogen:	The immunogen is a synthetic peptide directed towards the N-terminal region of Human RAB7L1
Sequence:	RDHLFKVLVV GDAAVGKTSL VQRYSQDSFS KHYKSTVGGQ ERFTSMTRLY
Predicted Reactivity:	Cow: 100%, Dog: 86%, Guinea Pig: 92%, Horse: 100%, Human: 100%, Mouse: 100%, Pig: 100%, Rabbit: 100%, Rat: 100%
Characteristics:	This is a rabbit polyclonal antibody against RAB7L1. It was validated on Western Blot.
Purification:	Affinity Purified

Target Details

Target:	RAB7L1
---------	--------

Target Details

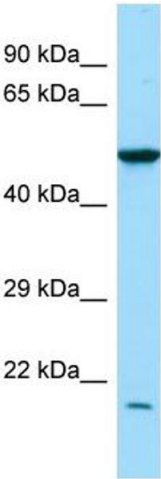
Alternative Name:	RAB7L1 (RAB7L1 Products)
Background:	The function of this protein remains unknown. Alias Symbols: DKFZp686P1051, RAB7L Protein Interaction Partner: BEND7, C11orf49, LDOC1, TRIM27, UBC, LSM7, Protein Size: 179
Molecular Weight:	20 kDa
Gene ID:	8934
NCBI Accession:	NM_001135663 , NP_001129135
UniProt:	O14966

Application Details

Application Notes:	Optimal working dilutions should be determined experimentally by the investigator.
Comment:	Antigen size: 179 AA
Restrictions:	For Research Use only

Handling

Format:	Liquid
Concentration:	Lot specific
Buffer:	Liquid. Purified antibody supplied in 1x PBS buffer with 0.09 % (w/v) sodium azide and 2 % sucrose.
Preservative:	Sodium azide
Precaution of Use:	This product contains Sodium azide: a POISONOUS AND HAZARDOUS SUBSTANCE which should be handled by trained staff only.
Handling Advice:	Avoid repeated freeze-thaw cycles.
Storage:	-20 °C
Storage Comment:	For short term use, store at 2-8°C up to 1 week. For long term storage, store at -20°C in small aliquots to prevent freeze-thaw cycles.



Western Blotting

Image 1. WB Suggested Anti-RAB7L1 Antibody Titration:
1.0 ug/ml Positive Control: MCF7 Whole Cell RAB7L1 is supported by BioGPS gene expression data to be expressed in MCF7