

Datasheet for ABIN2790440
anti-RAB30 antibody (C-Term)[Go to Product page](#)

2 Images

Overview

Quantity:	100 µL
Target:	RAB30
Binding Specificity:	C-Term
Reactivity:	Human, Mouse, Rat, Dog, Cow, Guinea Pig, Horse, Rabbit, Goat, Zebrafish (Danio rerio)
Host:	Rabbit
Clonality:	Polyclonal
Conjugate:	This RAB30 antibody is un-conjugated
Application:	Western Blotting (WB)

Product Details

Immunogen:	The immunogen is a synthetic peptide directed towards the C-terminal region of Human RAB30
Sequence:	ERREVSQQR AEEFSEAQDMY YLETSAKESD NVEKLFLDLA CRLISEARQN
Predicted Reactivity:	Cow: 100%, Dog: 100%, Goat: 100%, Guinea Pig: 100%, Horse: 100%, Human: 100%, Mouse: 100%, Rabbit: 100%, Rat: 100%, Zebrafish: 100%
Characteristics:	This is a rabbit polyclonal antibody against RAB30. It was validated on Western Blot.
Purification:	Affinity Purified

Target Details

Target:	RAB30
Alternative Name:	RAB30 (RAB30 Products)

Target Details

Background:	The function of this protein remains unknown. Alias Symbols: - Protein Interaction Partner: Ccdc64b, EIF5A2, UBC, SMAD1, Protein Size: 203
-------------	---

Molecular Weight:	23 kDa
-------------------	--------

Gene ID:	27314
----------	-------

NCBI Accession:	NM_014488 , NP_055303
-----------------	---

UniProt:	Q15771
----------	------------------------

Application Details

Application Notes:	Optimal working dilutions should be determined experimentally by the investigator.
--------------------	--

Comment:	Antigen size: 203 AA
----------	----------------------

Restrictions:	For Research Use only
---------------	-----------------------

Handling

Format:	Liquid
---------	--------

Concentration:	Lot specific
----------------	--------------

Buffer:	Liquid. Purified antibody supplied in 1x PBS buffer with 0.09 % (w/v) sodium azide and 2 % sucrose.
---------	---

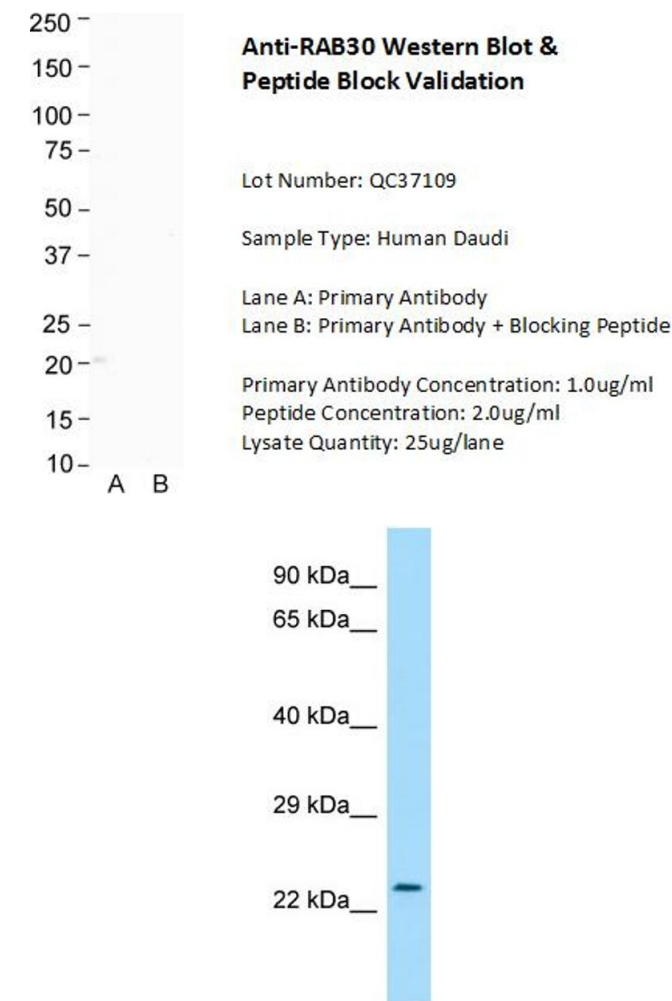
Preservative:	Sodium azide
---------------	--------------

Precaution of Use:	This product contains Sodium azide: a POISONOUS AND HAZARDOUS SUBSTANCE which should be handled by trained staff only.
--------------------	--

Handling Advice:	Avoid repeated freeze-thaw cycles.
------------------	------------------------------------

Storage:	-20 °C
----------	--------

Storage Comment:	For short term use, store at 2-8°C up to 1 week. For long term storage, store at -20°C in small aliquots to prevent freeze-thaw cycles.
------------------	---



Western Blotting

Image 1. Host: Rabbit Target Name: RAB30 Sample Type: Human Daudi Lane A: Primary Antibody Lane B: Primary Antibody + Blocking Peptide Primary Antibody Concentration: 1.0 ug/ml Peptide Concentration: 2.0 ug/ml Lysate Quantity: 25 ug/lane

Western Blotting

Image 2. WB Suggested Anti-RAB30 Antibody Titration: 1.0 ug/ml Positive Control: Jurkat Whole Cell