

Datasheet for ABIN2790444
anti-SLC13A4 antibody (Middle Region)[Go to Product page](#)

1 Image

Overview

| | |
|----------------------|----------------------------------------|
| Quantity: | 100 µL |
| Target: | SLC13A4 |
| Binding Specificity: | Middle Region |
| Reactivity: | Human, Rat, Mouse, Cow, Dog, Horse |
| Host: | Rabbit |
| Clonality: | Polyclonal |
| Conjugate: | This SLC13A4 antibody is un-conjugated |
| Application: | Western Blotting (WB) |

Product Details

| | |
|-----------------------|------------------------------------------------------------------------------------------|
| Immunogen: | The immunogen is a synthetic peptide directed towards the middle region of Human SLC13A4 |
| Sequence: | NPIKTANQHQ GKKQHPSQEK PQVLTPSPRK QKLNRYRSH HDQMICKCLS |
| Predicted Reactivity: | Cow: 90%, Dog: 91%, Horse: 85%, Human: 100%, Mouse: 79%, Rat: 79% |
| Characteristics: | This is a rabbit polyclonal antibody against SLC13A4. It was validated on Western Blot. |
| Purification: | Affinity Purified |

Target Details

| | |
|-------------------|------------------------------------------------------------------------------------------|
| Target: | SLC13A4 |
| Alternative Name: | SLC13A4 (SLC13A4 Products) |
| Background: | SLC13A4 is a sodium/sulfate cotransporter that mediates sulfate reabsorption in the high |

Target Details

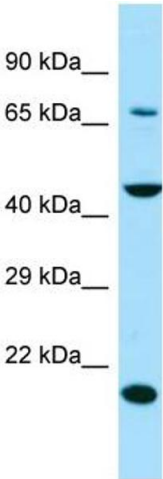
| | |
|-------------------|-------------------------------------------------------------------------------|
| | endothelial venules (HEV). Alias Symbols: SUT-1, SUT1 Protein Size: 626 |
| Molecular Weight: | 69 kDa |
| Gene ID: | 26266 |
| NCBI Accession: | NM_012450 , NP_036582 |
| UniProt: | Q9UKG4 |

Application Details

| | |
|--------------------|------------------------------------------------------------------------------------|
| Application Notes: | Optimal working dilutions should be determined experimentally by the investigator. |
| Comment: | Antigen size: 626 AA |
| Restrictions: | For Research Use only |

Handling

| | |
|--------------------|-----------------------------------------------------------------------------------------------------------------------------------------|
| Format: | Liquid |
| Concentration: | Lot specific |
| Buffer: | Liquid. Purified antibody supplied in 1x PBS buffer with 0.09 % (w/v) sodium azide and 2 % sucrose. |
| Preservative: | Sodium azide |
| Precaution of Use: | This product contains Sodium azide: a POISONOUS AND HAZARDOUS SUBSTANCE which should be handled by trained staff only. |
| Handling Advice: | Avoid repeated freeze-thaw cycles. |
| Storage: | -20 °C |
| Storage Comment: | For short term use, store at 2-8°C up to 1 week. For long term storage, store at -20°C in small aliquots to prevent freeze-thaw cycles. |



Western Blotting

Image 1. WB Suggested Anti-SLC13A4 Antibody Titration:
1.0 ug/ml Positive Control: Jurkat Whole Cell