



[Go to Product page](#)

Datasheet for ABIN2790445
anti-SMAP2 antibody (N-Term)

1 Image

Overview

Quantity:	100 µL
Target:	SMAP2
Binding Specificity:	N-Term
Reactivity:	Human, Mouse, Rat, Rabbit, Cow, Dog, Guinea Pig, Horse, Pig
Host:	Rabbit
Clonality:	Polyclonal
Conjugate:	This SMAP2 antibody is un-conjugated
Application:	Western Blotting (WB)

Product Details

Immunogen:	The immunogen is a synthetic peptide directed towards the N-terminal region of Human SMAP2
Sequence:	LPETFRRPQI DPAVEGFIRD KYEKKKYMDR SLDINAFRKE KDDKWKRGSE
Predicted Reactivity:	Cow: 93%, Dog: 100%, Guinea Pig: 93%, Horse: 93%, Human: 100%, Mouse: 92%, Pig: 100%, Rabbit: 100%, Rat: 100%
Characteristics:	This is a rabbit polyclonal antibody against SMAP2. It was validated on Western Blot.
Purification:	Affinity Purified

Target Details

Target:	SMAP2
---------	-------

Target Details

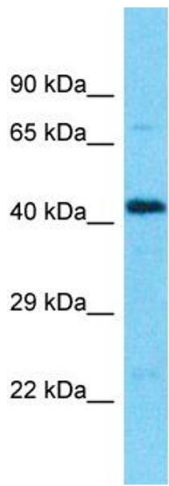
Alternative Name:	SMAP2 (SMAP2 Products)
Background:	<p>SMAP2 is a GTPase activating protein that acts on ARF1. It can also activate ARF6 and may play a role in clathrin-dependent retrograde transport from early endosomes to the trans-Golgi network.</p> <p>Alias Symbols: RP1-228H13.3, SMAP1L</p> <p>Protein Interaction Partner: C1orf94, FAM168A, DAZAP2, MAGED1, DAB1, UBC, VCAM1, FN1,</p> <p>Protein Size: 429</p>
Molecular Weight:	47 kDa
Gene ID:	64744
NCBI Accession:	NM_022733 , NP_073570
UniProt:	Q8WU79

Application Details

Application Notes:	Optimal working dilution should be determined by the investigator.
Restrictions:	For Research Use only

Handling

Format:	Liquid
Concentration:	1 mg/mL
Buffer:	Liquid. Purified antibody supplied in 1x PBS buffer with 0.09 % (w/v) sodium azide and 2 % sucrose.
Preservative:	Sodium azide
Precaution of Use:	This product contains Sodium azide: a POISONOUS AND HAZARDOUS SUBSTANCE which should be handled by trained staff only.
Handling Advice:	Avoid repeat freeze-thaw cycles.
Storage:	-20 °C
Storage Comment:	For short term use, store at 2-8°C up to 1 week. For long term storage, store at -20°C in small aliquots to prevent freeze-thaw cycles.



Host: Rabbit
Target Name: SMAP2
Sample Tissue: U937 Cell Lysate
Antibody Dilution: 1.0µg/ml

Western Blotting

Image 1. Host: Rabbit Target Name: SMAP2 Sample Type: U937 Whole Cell lysates Antibody Dilution: 1.0ug/ml