

Datasheet for ABIN2790446
anti-SMAP2 antibody (C-Term)[Go to Product page](#)

1 Image

Overview

Quantity:	100 µL
Target:	SMAP2
Binding Specificity:	C-Term
Reactivity:	Human, Mouse, Rat, Rabbit, Cow, Dog, Guinea Pig, Horse
Host:	Rabbit
Clonality:	Polyclonal
Conjugate:	This SMAP2 antibody is un-conjugated
Application:	Western Blotting (WB)

Product Details

Immunogen:	The immunogen is a synthetic peptide directed towards the C-terminal region of Human SMAP2
Sequence:	KVVGSMPTAG SAGSVPENLN LFPEPGSKSE EIGKKQLSKD SILSLYGSQT
Predicted Reactivity:	Cow: 86%, Dog: 93%, Guinea Pig: 93%, Horse: 93%, Human: 100%, Mouse: 93%, Rabbit: 100%, Rat: 93%
Characteristics:	This is a rabbit polyclonal antibody against SMAP2. It was validated on Western Blot.
Purification:	Affinity Purified

Target Details

Target:	SMAP2
---------	-------

Target Details

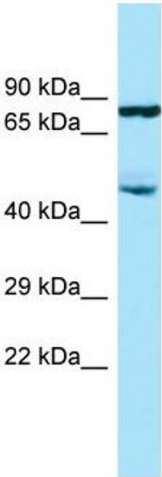
Alternative Name:	SMAP2 (SMAP2 Products)
Background:	<p>SMAP2 is a GTPase activating protein that acts on ARF1. SMAP2 can also activate ARF6 (in vitro). It may play a role in clathrin-dependent retrograde transport from early endosomes to the trans-Golgi network.</p> <p>Alias Symbols: RP1-228H13.3, SMAP1L</p> <p>Protein Interaction Partner: C1orf94, FAM168A, DAZAP2, MAGED1, DAB1, UBC, VCAM1, FN1,</p> <p>Protein Size: 429</p>
Molecular Weight:	47 kDa
Gene ID:	64744
NCBI Accession:	NM_022733 , NP_073570
UniProt:	Q8WU79

Application Details

Application Notes:	Optimal working dilutions should be determined experimentally by the investigator.
Comment:	Antigen size: 429 AA
Restrictions:	For Research Use only

Handling

Format:	Liquid
Concentration:	Lot specific
Buffer:	Liquid. Purified antibody supplied in 1x PBS buffer with 0.09 % (w/v) sodium azide and 2 % sucrose.
Preservative:	Sodium azide
Precaution of Use:	This product contains Sodium azide: a POISONOUS AND HAZARDOUS SUBSTANCE which should be handled by trained staff only.
Handling Advice:	Avoid repeated freeze-thaw cycles.
Storage:	-20 °C
Storage Comment:	For short term use, store at 2-8°C up to 1 week. For long term storage, store at -20°C in small aliquots to prevent freeze-thaw cycles.



Western Blotting

Image 1. WB Suggested Anti-SMAP2 Antibody Titration: 1.0 ug/ml Positive Control: THP-1 Whole Cell