

Datasheet for ABIN2790447

anti-SNTG2 antibody (C-Term)[Go to Product page](#)**1** Image

Overview

Quantity:	100 µL
Target:	SNTG2
Binding Specificity:	C-Term
Reactivity:	Human, Mouse, Cow, Dog, Guinea Pig, Horse, Rabbit, Rat, Zebrafish (Danio rerio)
Host:	Rabbit
Clonality:	Polyclonal
Conjugate:	This SNTG2 antibody is un-conjugated
Application:	Western Blotting (WB)

Product Details

Immunogen:	The immunogen is a synthetic peptide directed towards the C-terminal region of Human SNTG2
Sequence:	NVLWRFKFSQ LKGSSDDGKT RVKLLFQNLDTKQIETKELE FQDLRAVLHC
Predicted Reactivity:	Cow: 79%, Dog: 93%, Guinea Pig: 86%, Horse: 100%, Human: 100%, Mouse: 100%, Rabbit: 79%, Rat: 100%, Zebrafish: 100%
Characteristics:	This is a rabbit polyclonal antibody against SNTG2. It was validated on Western Blot.
Purification:	Affinity Purified

Target Details

Target:	SNTG2
Alternative Name:	SNTG2 (SNTG2 Products)

Target Details

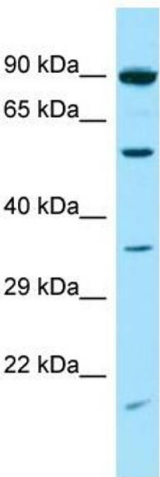
Background:	<p>This gene encodes a protein belonging to the syntrophin family. Syntrophins are cytoplasmic peripheral membrane proteins that bind to components of mechanosensitive sodium channels and the extreme carboxy-terminal domain of dystrophin and dystrophin-related proteins. The PDZ domain of this protein product interacts with a protein component of a mechanosensitive sodium channel that affects channel gating. Absence or reduction of this protein product has been associated with Duchenne muscular dystrophy. There is evidence of alternative splicing yet the full-length nature of these variants has not been described.</p> <p>Alias Symbols: G2SYN, SYN5</p> <p>Protein Interaction Partner: MPP3, BAI1, DTNB, DTNA, SCN5A, DMD,</p> <p>Protein Size: 539</p>
Molecular Weight:	59 kDa
Gene ID:	54221
NCBI Accession:	NM_018968 , NP_061841
UniProt:	Q9NY99

Application Details

Application Notes:	Optimal working dilution should be determined by the investigator.
Restrictions:	For Research Use only

Handling

Format:	Liquid
Concentration:	1 mg/mL
Buffer:	Liquid. Purified antibody supplied in 1x PBS buffer with 0.09 % (w/v) sodium azide and 2 % sucrose.
Preservative:	Sodium azide
Precaution of Use:	This product contains Sodium azide: a POISONOUS AND HAZARDOUS SUBSTANCE which should be handled by trained staff only.
Handling Advice:	Avoid repeat freeze-thaw cycles.
Storage:	-20 °C
Storage Comment:	For short term use, store at 2-8°C up to 1 week. For long term storage, store at -20°C in small aliquots to prevent freeze-thaw cycles.



Western Blotting

Image 1.