

Datasheet for ABIN2790449 anti-SPACA3 antibody (C-Term)



[Go to Product page](#)

1 Image

Overview

| | |
|----------------------|--|
| Quantity: | 100 µL |
| Target: | SPACA3 |
| Binding Specificity: | C-Term |
| Reactivity: | Human, Mouse, Rat, Horse, Pig, Rabbit, Sheep, Cow, Dog, Goat |
| Host: | Rabbit |
| Clonality: | Polyclonal |
| Conjugate: | This SPACA3 antibody is un-conjugated |
| Application: | Western Blotting (WB) |

Product Details

| | |
|-----------------------|--|
| Immunogen: | The immunogen is a synthetic peptide directed towards the C-terminal region of Mouse Spaca3 |
| Sequence: | RIYCTDLLNN DL KDSIVCAMKI VQEPLGLGYW EAWRHHCQGR DLSDWVD |
| Predicted Reactivity: | Cow: 86%, Dog: 86%, Goat: 86%, Horse: 100%, Human: 100%, Mouse: 79%, Pig: 93%, Rabbit: 86%, Rat: 92%, Sheep: 86% |
| Characteristics: | This is a rabbit polyclonal antibody against Spaca3. It was validated on Western Blot. |
| Purification: | Affinity Purified |

Target Details

| | |
|---------|--------|
| Target: | SPACA3 |
|---------|--------|

Target Details

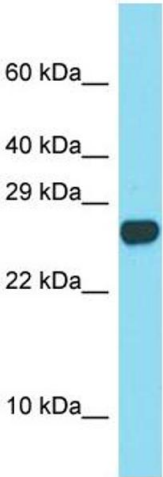
| | |
|-------------------|--|
| Alternative Name: | Spaca3 (SPACA3 Products) |
| Background: | Spaca3 is a sperm surface membrane protein that may be involved in sperm-egg plasma membrane adhesion and fusion during fertilization. It could be a potential receptor for the egg oligosaccharide residue N-acetylglucosamine, which is present in the extracellular matrix over the egg plasma membrane. The processed form has no detectable bacteriolytic activity in vitro. Protein Size: 221 |
| Molecular Weight: | 24 kDa |
| Gene ID: | 75622 |
| UniProt: | Q9D9X8 |
| Pathways: | Glycosaminoglycan Metabolic Process |

Application Details

| | |
|--------------------|--|
| Application Notes: | Optimal working dilution should be determined by the investigator. |
| Restrictions: | For Research Use only |

Handling

| | |
|--------------------|---|
| Format: | Liquid |
| Concentration: | 1 mg/mL |
| Buffer: | Liquid. Purified antibody supplied in 1x PBS buffer with 0.09 % (w/v) sodium azide and 2 % sucrose. |
| Preservative: | Sodium azide |
| Precaution of Use: | This product contains Sodium azide: a POISONOUS AND HAZARDOUS SUBSTANCE which should be handled by trained staff only. |
| Handling Advice: | Avoid repeat freeze-thaw cycles. |
| Storage: | -20 °C |
| Storage Comment: | For short term use, store at 2-8°C up to 1 week. For long term storage, store at -20°C in small aliquots to prevent freeze-thaw cycles. |



Western Blotting

Image 1.