

Datasheet for ABIN2790455  
**anti-ADPRHL2 antibody (C-Term)**[Go to Product page](#)

## 1 Image

## Overview

Quantity:	100 µL
Target:	ADPRHL2
Binding Specificity:	C-Term
Reactivity:	Human, Mouse, Rat, Cow, Dog, Guinea Pig, Horse, Rabbit
Host:	Rabbit
Clonality:	Polyclonal
Conjugate:	This ADPRHL2 antibody is un-conjugated
Application:	Western Blotting (WB)

## Product Details

Immunogen:	The immunogen is a synthetic peptide directed towards the C-terminal region of Human ADPRHL2
Sequence:	SVLDARELGM EERPYSRLK KIGELLDQAS VTREEVVSEL GNGIAAFESV
Predicted Reactivity:	Cow: 100%, Dog: 100%, Guinea Pig: 100%, Horse: 100%, Human: 100%, Mouse: 100%, Rabbit: 93%, Rat: 100%
Characteristics:	This is a rabbit polyclonal antibody against ADPRHL2. It was validated on Western Blot.
Purification:	Affinity Purified

## Target Details

Target:	ADPRHL2
---------	---------

## Target Details

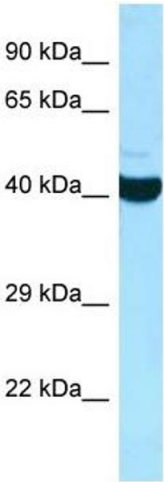
Alternative Name:	ADPRHL2 ( <a href="#">ADPRHL2 Products</a> )
Background:	This gene encodes a member of the ADP Alias Symbols: ARH3, FLJ20446 Protein Interaction Partner: UBC, FRA10AC1, HEXDC, Protein Size: 363
Molecular Weight:	39 kDa
Gene ID:	54936
NCBI Accession:	<a href="#">NM_017825</a> , <a href="#">NP_060295</a>
UniProt:	<a href="#">Q9NX46</a>

## Application Details

Application Notes:	Optimal working dilutions should be determined experimentally by the investigator.
Comment:	Antigen size: 363 AA
Restrictions:	For Research Use only

## Handling

Format:	Liquid
Concentration:	Lot specific
Buffer:	Liquid. Purified antibody supplied in 1x PBS buffer with 0.09 % (w/v) sodium azide and 2 % sucrose.
Preservative:	Sodium azide
Precaution of Use:	This product contains Sodium azide: a POISONOUS AND HAZARDOUS SUBSTANCE which should be handled by trained staff only.
Handling Advice:	Avoid repeated freeze-thaw cycles.
Storage:	-20 °C
Storage Comment:	For short term use, store at 2-8°C up to 1 week. For long term storage, store at -20°C in small aliquots to prevent freeze-thaw cycles.



Western Blotting

**Image 1.** WB Suggested Anti-ADPRHL2 Antibody Titration:  
1.0 ug/ml Positive Control: HepG2 Whole Cell