



[Go to Product page](#)

Datasheet for ABIN2790463

anti-CHMP4C antibody (C-Term)

1 Image

Overview

Quantity:	100 µL
Target:	CHMP4C
Binding Specificity:	C-Term
Reactivity:	Human, Mouse, Rat, Cow, Dog, Guinea Pig, Horse, Rabbit, Saccharomyces cerevisiae, Zebrafish (Danio rerio)
Host:	Rabbit
Clonality:	Polyclonal
Conjugate:	This CHMP4C antibody is un-conjugated
Application:	Western Blotting (WB)

Product Details

Immunogen:	The immunogen is a synthetic peptide directed towards the C-terminal region of Mouse Chmp4c
Sequence:	SEAFSQRVQF ADGFDEAELL AELEELEQEE LNKKMTSLEL PNVPSSSLPA
Predicted Reactivity:	Cow: 100%, Dog: 92%, Guinea Pig: 100%, Horse: 100%, Human: 100%, Mouse: 100%, Rabbit: 100%, Rat: 100%, Yeast: 92%, Zebrafish: 92%
Characteristics:	This is a rabbit polyclonal antibody against Chmp4c. It was validated on Western Blot.
Purification:	Affinity Purified

Target Details

Target:	CHMP4C
---------	--------

Target Details

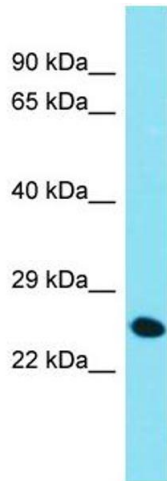
Alternative Name:	Chmp4c (CHMP4C Products)
Background:	<p>Chmp4c is a probable core component of the endosomal sorting required for transport complex III (ESCRT-III) which is involved in multivesicular bodies (MVBs) formation and sorting of endosomal cargo proteins into MVBs.</p> <p>Alias Symbols: 2010012P02Rik, 2210015K02Rik, 2310010I16Rik, Shax3, Snf7-3</p> <p>Protein Size: 232</p>
Molecular Weight:	26 kDa
Gene ID:	66371
NCBI Accession:	NM_025519 , NP_079795
UniProt:	Q9D7F7

Application Details

Application Notes:	Optimal working dilutions should be determined experimentally by the investigator.
Comment:	Antigen size: 232 AA
Restrictions:	For Research Use only

Handling

Format:	Liquid
Concentration:	Lot specific
Buffer:	Liquid. Purified antibody supplied in 1x PBS buffer with 0.09 % (w/v) sodium azide and 2 % sucrose.
Preservative:	Sodium azide
Precaution of Use:	This product contains Sodium azide: a POISONOUS AND HAZARDOUS SUBSTANCE which should be handled by trained staff only.
Handling Advice:	Avoid repeated freeze-thaw cycles.
Storage:	-20 °C
Storage Comment:	For short term use, store at 2-8°C up to 1 week. For long term storage, store at -20°C in small aliquots to prevent freeze-thaw cycles.



Western Blotting

Image 1. Host: Rabbit

Target Name: Chmp4c

Sample Tissue: Mouse Liver lysates

Antibody Dilution: 1.0 µg/mL