

Datasheet for ABIN2790468  
**anti-EOLA1 antibody (C-Term)**[Go to Product page](#)

## 1 Image

## Overview

Quantity:	100 µL
Target:	EOLA1 (CXorf40A)
Binding Specificity:	C-Term
Reactivity:	Human, Horse, Dog, Guinea Pig, Mouse, Rabbit, Rat
Host:	Rabbit
Clonality:	Polyclonal
Conjugate:	This EOLA1 antibody is un-conjugated
Application:	Western Blotting (WB)

## Product Details

Immunogen:	The immunogen is a synthetic peptide directed towards the C-terminal region of Human CXorf40A
Sequence:	EDLTPDEVVE LENQAVLTNL KQKYLTVISN PRWLLEPIPR KGGKDVFQVD
Predicted Reactivity:	Dog: 93%, Guinea Pig: 79%, Horse: 100%, Human: 100%, Mouse: 93%, Rabbit: 79%, Rat: 93%
Characteristics:	This is a rabbit polyclonal antibody against CXorf40A. It was validated on Western Blot.
Purification:	Affinity Purified

## Target Details

Target:	EOLA1 (CXorf40A)
Alternative Name:	CXorf40A ( <a href="#">CXorf40A Products</a> )

## Target Details

Background: CXorf40A may have an important role of cell protection in inflammation reaction.  
Alias Symbols: CXorf40, EOLA1, FLJ52212  
Protein Interaction Partner: MT2A,  
Protein Size: 158

Molecular Weight: 17 kDa

Gene ID: 91966

NCBI Accession: [NM\\_178124](#), [NP\\_835225](#)

UniProt: [Q8TE69](#)

## Application Details

Application Notes: Optimal working dilutions should be determined experimentally by the investigator.

Comment: Antigen size: 158 AA

Restrictions: For Research Use only

## Handling

Format: Liquid

Concentration: Lot specific

Buffer: Liquid. Purified antibody supplied in 1x PBS buffer with 0.09 % (w/v) sodium azide and 2 % sucrose.

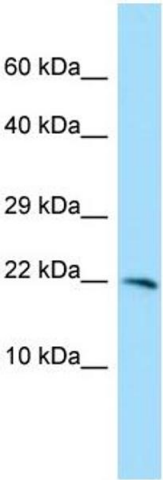
Preservative: Sodium azide

Precaution of Use: This product contains Sodium azide: a POISONOUS AND HAZARDOUS SUBSTANCE which should be handled by trained staff only.

Handling Advice: Avoid repeated freeze-thaw cycles.

Storage: -20 °C

Storage Comment: For short term use, store at 2-8°C up to 1 week. For long term storage, store at -20°C in small aliquots to prevent freeze-thaw cycles.



Western Blotting

**Image 1.** WB Suggested Anti-CXorf40A Antibody Titration:  
1.0 ug/ml Positive Control: MCF7 Whole Cell CXorf40A is strongly supported by BioGPS gene expression data to be expressed in Human MCF7 cells