

Datasheet for ABIN2790482

anti-LPAR6 antibody (N-Term)[Go to Product page](#)**1** Image

Overview

Quantity:	100 µL
Target:	LPAR6
Binding Specificity:	N-Term
Reactivity:	Human, Mouse, Rat, Rabbit, Cow, Horse, Pig, Dog, Sheep, Zebrafish (Danio rerio)
Host:	Rabbit
Clonality:	Polyclonal
Conjugate:	This LPAR6 antibody is un-conjugated
Application:	Western Blotting (WB)

Product Details

Immunogen:	The immunogen is a synthetic peptide directed towards the N-terminal region of Human LPAR6
Sequence:	GDLLCKISVM LFYTNMYGSI LFLTCISVDR FLAIVYPFKS KTLRTKRNAK
Predicted Reactivity:	Cow: 100%, Dog: 100%, Horse: 100%, Human: 100%, Mouse: 100%, Pig: 100%, Rabbit: 100%, Rat: 100%, Sheep: 100%, Zebrafish: 86%
Characteristics:	This is a rabbit polyclonal antibody against LPAR6. It was validated on Western Blot.
Purification:	Affinity Purified

Target Details

Target:	LPAR6
Alternative Name:	LPAR6 (LPAR6 Products)

Target Details

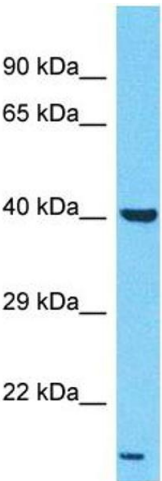
Background:	<p>The protein encoded by this gene belongs to the family of G-protein coupled receptors, that are preferentially activated by adenosine and uridine nucleotides. This gene aligns with an internal intron of the retinoblastoma susceptibility gene in the reverse orientation. Alternative splicing results in multiple transcript variants.</p> <p>Alias Symbols: ARWH1, LAH3, P2RY5, P2Y5</p> <p>Protein Size: 344</p>
Molecular Weight:	37 kDa
Gene ID:	10161
NCBI Accession:	NM_005767 , NP_005758
UniProt:	P43657

Application Details

Restrictions:	For Research Use only
---------------	-----------------------

Handling

Format:	Liquid
Concentration:	1 mg/mL
Buffer:	Liquid. Purified antibody supplied in 1x PBS buffer with 0.09 % (w/v) sodium azide and 2 % sucrose.
Preservative:	Sodium azide
Precaution of Use:	This product contains Sodium azide: a POISONOUS AND HAZARDOUS SUBSTANCE which should be handled by trained staff only.
Handling Advice:	Avoid repeat freeze-thaw cycles.
Storage:	-20 °C
Storage Comment:	For short term use, store at 2-8°C up to 1 week. For long term storage, store at -20°C in small aliquots to prevent freeze-thaw cycles.



Host: Rabbit
Target Name: LPAR6
Sample Tissue: Hela Cell Lysate
Antibody Dilution: 1.0µg/ml

Western Blotting

Image 1. Host: Rabbit Target Name: LPAR6 Sample Type:
Hela Whole Cell lysates Antibody Dilution: 1.0ug/ml