

Datasheet for ABIN2790487  
**anti-ODF3 antibody (N-Term)**[Go to Product page](#)

## 1 Image

## Overview

Quantity:	100 µL
Target:	ODF3
Binding Specificity:	N-Term
Reactivity:	Mouse, Human, Rat, Horse, Cow, Dog, Guinea Pig, Rabbit
Host:	Rabbit
Clonality:	Polyclonal
Conjugate:	This ODF3 antibody is un-conjugated
Application:	Western Blotting (WB)

## Product Details

Immunogen:	The immunogen is a synthetic peptide directed towards the N-terminal region of Human ODF3
Sequence:	IPPTTGFMKH TPTKLRAPAY SFRGAPMLLA ENCSPGPRYN VNPkILRTGK
Predicted Reactivity:	Cow: 93%, Dog: 93%, Guinea Pig: 93%, Horse: 86%, Human: 100%, Mouse: 93%, Rabbit: 93%, Rat: 93%
Characteristics:	This is a rabbit polyclonal antibody against ODF3. It was validated on Western Blot.
Purification:	Affinity Purified

## Target Details

Target:	ODF3
Alternative Name:	ODF3 ( <a href="#">ODF3 Products</a> )

## Target Details

Background:	ODF3 is a component of sperm flagella outer dense fibers, which add stiffness, elastic recoil, and protection against shearing forces during sperm movement. Protein Interaction Partner: SUMO2, Protein Size: 138
-------------	--

Molecular Weight:	15 kDa
-------------------	--------

Gene ID:	113746
----------	--------

## Application Details

Restrictions:	For Research Use only
---------------	-----------------------

## Handling

Format:	Liquid
---------	--------

Concentration:	1 mg/mL
----------------	---------

Buffer:	Liquid. Purified antibody supplied in 1x PBS buffer with 0.09 % (w/v) sodium azide and 2 % sucrose.
---------	---

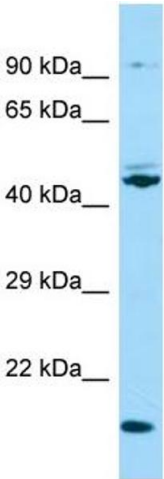
Preservative:	Sodium azide
---------------	--------------

Precaution of Use:	This product contains Sodium azide: a POISONOUS AND HAZARDOUS SUBSTANCE which should be handled by trained staff only.
--------------------	--

Handling Advice:	Avoid repeat freeze-thaw cycles.
------------------	----------------------------------

Storage:	-20 °C
----------	--------

Storage Comment:	For short term use, store at 2-8°C up to 1 week. For long term storage, store at -20°C in small aliquots to prevent freeze-thaw cycles.
------------------	---



Western Blotting

Image 1.