

Datasheet for ABIN2790488
anti-ODF3 antibody (Middle Region)[Go to Product page](#)

1 Image

Overview

| | |
|----------------------|--|
| Quantity: | 100 µL |
| Target: | ODF3 |
| Binding Specificity: | Middle Region |
| Reactivity: | Mouse, Human, Rat, Horse, Cow, Dog, Guinea Pig, Rabbit |
| Host: | Rabbit |
| Clonality: | Polyclonal |
| Conjugate: | This ODF3 antibody is un-conjugated |
| Application: | Western Blotting (WB) |

Product Details

| | |
|-----------------------|---|
| Immunogen: | The immunogen is a synthetic peptide directed towards the middle region of Human ODF3 |
| Sequence: | KTMLTPGPGD YFPEKSTKYV FDSAPSHSIS ARTKAFRVDS TPGPAAAYMLP |
| Predicted Reactivity: | Cow: 93%, Dog: 93%, Guinea Pig: 93%, Horse: 100%, Human: 100%, Mouse: 100%, Rabbit: 86%, Rat: 93% |
| Characteristics: | This is a rabbit polyclonal antibody against ODF3. It was validated on Western Blot. |
| Purification: | Affinity Purified |

Target Details

| | |
|-------------------|--|
| Target: | ODF3 |
| Alternative Name: | ODF3 (ODF3 Products) |

Target Details

Background: The function of this protein remains unknown.
Protein Interaction Partner: SUMO2,
Protein Size: 207

Molecular Weight: 22 kDa

Gene ID: 113746

UniProt: [B7ZLT0](#)

Application Details

Restrictions: For Research Use only

Handling

Format: Liquid

Concentration: 1 mg/mL

Buffer: Liquid. Purified antibody supplied in 1x PBS buffer with 0.09 % (w/v) sodium azide and 2 % sucrose.

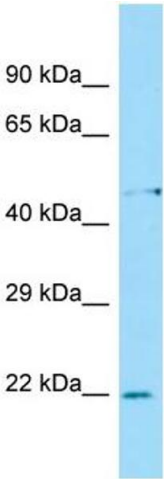
Preservative: Sodium azide

Precaution of Use: This product contains Sodium azide: a POISONOUS AND HAZARDOUS SUBSTANCE which should be handled by trained staff only.

Handling Advice: Avoid repeat freeze-thaw cycles.

Storage: -20 °C

Storage Comment: For short term use, store at 2-8°C up to 1 week. For long term storage, store at -20°C in small aliquots to prevent freeze-thaw cycles.



Western Blotting

Image 1.