

Datasheet for ABIN2790494

**anti-POF1B antibody (N-Term)**[Go to Product page](#)**1** Image

## Overview

Quantity:	100 µL
Target:	POF1B
Binding Specificity:	N-Term
Reactivity:	Human, Mouse, Rat, Cow, Guinea Pig, Horse, Rabbit, Pig, Dog
Host:	Rabbit
Clonality:	Polyclonal
Conjugate:	This POF1B antibody is un-conjugated
Application:	Western Blotting (WB)

## Product Details

Immunogen:	The immunogen is a synthetic peptide directed towards the N-terminal region of Human POF1B
Sequence:	HYHCYHQSSQ AQQPPEKNVV YERVRTYSGP MNKV VQALDP FNSREVL SPL
Predicted Reactivity:	Cow: 93%, Dog: 86%, Guinea Pig: 85%, Horse: 93%, Human: 100%, Mouse: 93%, Pig: 100%, Rabbit: 86%, Rat: 100%
Characteristics:	This is a rabbit polyclonal antibody against POF1B. It was validated on Western Blot.
Purification:	Affinity Purified

## Target Details

Target:	POF1B
Alternative Name:	POF1B ( <a href="#">POF1B Products</a> )

## Target Details

Background:	<p>Premature ovarian failure (POF) is characterized by primary or secondary amenorrhea in women less than 40 years old. Two POF susceptibility regions called "POF1" and "POF2" have been identified by breakpoint mapping of X-autosome translocations. POF1 extends from Xq21-qter while POF2 extends from Xq13.3 to Xq21.1. This gene, POF1B, resides in the POF2 region. This gene is expressed at trace levels in mouse prenatal ovary and is barely detectable or absent from adult ovary, in human and in the mouse respectively. This gene's expression is restricted to epithelia with its highest expression in the epidermis, and oro-pharyngeal and gastro-intestinal tracts. The protein encoded by this gene binds non-muscle actin filaments. The role this gene may play in the etiology of premature ovarian failure remains to be determined.</p> <p>Alias Symbols: FLJ22792, POF, POF2B</p> <p>Protein Interaction Partner: ESR1, COPS5, UBC, Cdk1, Akap12, Fam134a, Lyplal1, Tpr, UCHL5,</p> <p>Protein Size: 589</p>
-------------	---

Molecular Weight:	65 kDa
-------------------	--------

Gene ID:	79983
----------	-------

NCBI Accession:	<a href="#">NM_024921</a> , <a href="#">NP_079197</a>
-----------------	---

UniProt:	<a href="#">Q8WVV4</a>
----------	------------------------

## Application Details

Application Notes:	Optimal working dilutions should be determined experimentally by the investigator.
--------------------	--

Comment:	Antigen size: 589 AA
----------	----------------------

Restrictions:	For Research Use only
---------------	-----------------------

## Handling

Format:	Liquid
---------	--------

Concentration:	Lot specific
----------------	--------------

Buffer:	Liquid. Purified antibody supplied in 1x PBS buffer with 0.09 % (w/v) sodium azide and 2 % sucrose.
---------	---

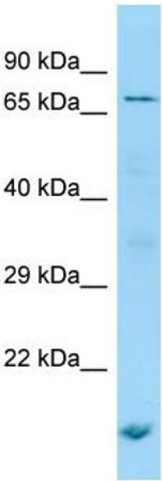
Preservative:	Sodium azide
---------------	--------------

Precaution of Use:	This product contains Sodium azide: a POISONOUS AND HAZARDOUS SUBSTANCE which should be handled by trained staff only.
--------------------	--

Handling

Handling Advice:	Avoid repeated freeze-thaw cycles.
Storage:	-20 °C
Storage Comment:	For short term use, store at 2-8°C up to 1 week. For long term storage, store at -20°C in small aliquots to prevent freeze-thaw cycles.

Images



**Western Blotting**

**Image 1.** WB Suggested Anti-POF1B Antibody Titration: 1.0 ug/ml Positive Control: Jurkat Whole Cell