

Datasheet for ABIN2790506
anti-SYTL5 antibody (Middle Region)



[Go to Product page](#)

1 Image

Overview

Quantity:	100 µL
Target:	SYTL5
Binding Specificity:	Middle Region
Reactivity:	Rat, Human, Horse, Pig, Rabbit
Host:	Rabbit
Clonality:	Polyclonal
Conjugate:	This SYTL5 antibody is un-conjugated
Application:	Western Blotting (WB)

Product Details

Immunogen:	The immunogen is a synthetic peptide directed towards the middle region of Human SYTL5
Sequence:	PGAEVQSQE QTRQDAEKSD TSPVAGKKAS HDGPKRKGFL LSKFRSATRG
Predicted Reactivity:	Horse: 93%, Human: 100%, Pig: 92%, Rabbit: 86%, Rat: 93%
Characteristics:	This is a rabbit polyclonal antibody against SYTL5. It was validated on Western Blot.
Purification:	Affinity Purified

Target Details

Target:	SYTL5
Alternative Name:	SYTL5 (SYTL5 Products)
Background:	The protein encoded by this gene belongs to the synaptotagmin-like (Slp) protein family, which

Target Details

contains a unique homology domain at the N-terminus, referred to as the Slp homology domain (SHD). The SHD functions as a binding site for Rab27A, which plays a role in protein transport. Expression of this gene is restricted to placenta and liver, suggesting that it might be involved in Rab27A-dependent membrane trafficking in specific tissues. Alternatively spliced transcript variants encoding different isoforms have been found for this gene.

Alias Symbols: slp5

Protein Interaction Partner: CEP70, WAC, RAB27B, RAB27A, RAB6A, RAB3A,

Protein Size: 921

Molecular Weight: 102 kDa

Gene ID: 94122

NCBI Accession: [NM_001163334](#)

UniProt: [Q8TDW5](#)

Application Details

Application Notes: Optimal working dilutions should be determined experimentally by the investigator.

Comment: Antigen size: 921 AA

Restrictions: For Research Use only

Handling

Format: Liquid

Concentration: Lot specific

Buffer: Liquid. Purified antibody supplied in 1x PBS buffer with 0.09 % (w/v) sodium azide and 2 % sucrose.

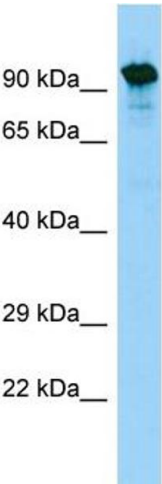
Preservative: Sodium azide

Precaution of Use: This product contains Sodium azide: a POISONOUS AND HAZARDOUS SUBSTANCE which should be handled by trained staff only.

Handling Advice: Avoid repeated freeze-thaw cycles.

Storage: -20 °C

Storage Comment: For short term use, store at 2-8°C up to 1 week. For long term storage, store at -20°C in small aliquots to prevent freeze-thaw cycles.



Western Blotting

Image 1. WB Suggested Anti-SYTL5 Antibody Titration: 1.0 ug/ml Positive Control: HepG2 Whole Cell