

Datasheet for ABIN2790513  
**anti-ADAT2 antibody (N-Term)**[Go to Product page](#)

## 1 Image

## Overview

Quantity:	100 µL
Target:	ADAT2
Binding Specificity:	N-Term
Reactivity:	Human, Mouse, Rat, Cow, Dog, Guinea Pig, Horse, Rabbit, Zebrafish (Danio rerio)
Host:	Rabbit
Clonality:	Polyclonal
Conjugate:	This ADAT2 antibody is un-conjugated
Application:	Western Blotting (WB)

## Product Details

Immunogen:	The immunogen is a synthetic peptide directed towards the N-terminal region of Human ADAT2
Sequence:	AKEALENTEV PVGCLMVYNN EVVGKGRNEV NQTKNATRHA EMVAIDQVLD
Predicted Reactivity:	Cow: 100%, Dog: 100%, Guinea Pig: 100%, Horse: 100%, Human: 100%, Mouse: 100%, Rabbit: 100%, Rat: 100%, Zebrafish: 93%
Characteristics:	This is a rabbit polyclonal antibody against ADAT2. It was validated on Western Blot.
Purification:	Affinity Purified

## Target Details

Target:	ADAT2
Alternative Name:	ADAT2 ( <a href="#">ADAT2 Products</a> )

## Target Details

Background: ADAT2 is probably participates in deamination of adenosine-34 to inosine in many tRNAs.  
Alias Symbols: DEADC1, DKFZp686L1118, FLJ44213, TAD2, dJ20N2, dJ20N2.1  
Protein Interaction Partner: NAV2, UBC, APP,  
Protein Size: 144

Molecular Weight: 16 kDa

Gene ID: 134637

NCBI Accession: [NM\\_182503](#), [NP\\_872309](#)

UniProt: [Q7Z6V5](#)

## Application Details

Application Notes: Optimal working dilutions should be determined experimentally by the investigator.

Comment: Antigen size: 144 AA

Restrictions: For Research Use only

## Handling

Format: Liquid

Concentration: Lot specific

Buffer: Liquid. Purified antibody supplied in 1x PBS buffer with 0.09 % (w/v) sodium azide and 2 % sucrose.

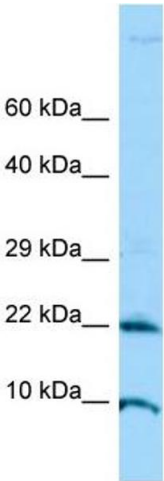
Preservative: Sodium azide

Precaution of Use: This product contains Sodium azide: a POISONOUS AND HAZARDOUS SUBSTANCE which should be handled by trained staff only.

Handling Advice: Avoid repeated freeze-thaw cycles.

Storage: -20 °C

Storage Comment: For short term use, store at 2-8°C up to 1 week. For long term storage, store at -20°C in small aliquots to prevent freeze-thaw cycles.



Western Blotting

**Image 1.** WB Suggested Anti-ADAT2 Antibody Titration: 1.0 ug/ml Positive Control: Jurkat Whole Cell