

Datasheet for ABIN2790519
anti-C2orf71 antibody (C-Term)



[Go to Product page](#)

1 Image

Overview

Quantity:	100 µL
Target:	C2orf71
Binding Specificity:	C-Term
Reactivity:	Human, Cow, Guinea Pig, Rabbit, Zebrafish (Danio rerio)
Host:	Rabbit
Clonality:	Polyclonal
Conjugate:	This C2orf71 antibody is un-conjugated
Application:	Western Blotting (WB)

Product Details

Immunogen:	The immunogen is a synthetic peptide directed towards the C-terminal region of Human C2orf71
Sequence:	SPCSPELQGG TRRASPPEFC VLGHGLQPEP RTGHIQDKSQ PEAQPQEEV
Predicted Reactivity:	Cow: 90%, Guinea Pig: 79%, Human: 100%, Rabbit: 77%, Zebrafish: 86%
Characteristics:	This is a rabbit polyclonal antibody against C2orf71. It was validated on Western Blot.
Purification:	Affinity Purified

Target Details

Target:	C2orf71
Alternative Name:	C2orf71 (C2orf71 Products)

Target Details

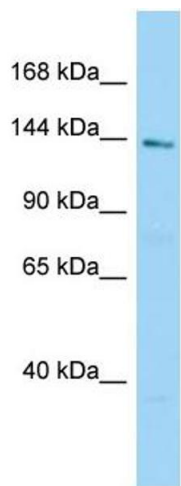
Background:	<p>The protein encoded by this gene is highly expressed in photoreceptors and may associate with the primary cilium of the outer segment. The encoded protein appears to undergo post-translational lipid modification. Nonsense and missense variants of this gene appear to cause a recessive form of retinitis pigmentosa.</p> <p>Alias Symbols: FLJ34931</p> <p>Protein Size: 1288</p>
Molecular Weight:	142 kDa
Gene ID:	388939
NCBI Accession:	NM_001029883 , NP_001025054
UniProt:	A6NGG8

Application Details

Application Notes:	Optimal working dilutions should be determined experimentally by the investigator.
Comment:	Antigen size: 1288 AA
Restrictions:	For Research Use only

Handling

Format:	Liquid
Concentration:	Lot specific
Buffer:	Liquid. Purified antibody supplied in 1x PBS buffer with 0.09 % (w/v) sodium azide and 2 % sucrose.
Preservative:	Sodium azide
Precaution of Use:	This product contains Sodium azide: a POISONOUS AND HAZARDOUS SUBSTANCE which should be handled by trained staff only.
Handling Advice:	Avoid repeated freeze-thaw cycles.
Storage:	-20 °C
Storage Comment:	For short term use, store at 2-8°C up to 1 week. For long term storage, store at -20°C in small aliquots to prevent freeze-thaw cycles.



Western Blotting

Image 1. WB Suggested Anti-C2orf71 Antibody Titration:
1.0 ug/ml Positive Control: Fetal kidney