

Datasheet for ABIN2790520

anti-C12orf10 antibody (N-Term)[Go to Product page](#)**1** Image

Overview

Quantity:	100 µL
Target:	C12orf10 (C12ORF10)
Binding Specificity:	N-Term
Reactivity:	Human, Rat, Mouse, Horse, Cow, Dog, Goat, Guinea Pig, Rabbit, Saccharomyces cerevisiae, Zebrafish (Danio rerio)
Host:	Rabbit
Clonality:	Polyclonal
Conjugate:	This C12orf10 antibody is un-conjugated
Application:	Western Blotting (WB)

Product Details

Immunogen:	The immunogen is a synthetic peptide directed towards the N-terminal region of Human C12orf10
Sequence:	DEALACALLR LLPEYRDAEI VRTRDPEKLA SCDIVVDVGG EYDPRRHRYD
Predicted Reactivity:	Cow: 93%, Dog: 93%, Goat: 86%, Guinea Pig: 93%, Horse: 93%, Human: 100%, Mouse: 79%, Rabbit: 93%, Rat: 100%, Yeast: 79%, Zebrafish: 79%
Characteristics:	This is a rabbit polyclonal antibody against C12orf10. It was validated on Western Blot.
Purification:	Affinity Purified

Target Details

Target:	C12orf10 (C12ORF10)
---------	---------------------

Target Details

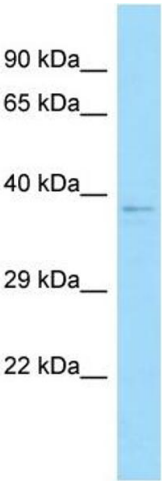
Alternative Name:	C12orf10 (C12ORF10 Products)
Background:	<p>The function of this protein remains unknown.</p> <p>Alias Symbols: MST024, MSTP024, MYG, MYG1</p> <p>Protein Interaction Partner: TMEM239, FAM9B, CMTM5, AGTRAP, ARL6IP1, DDX39B, THOP1, SORD, RBBP7, PGD, OXCT1, IDH1, HSPD1, SUGT1, GLRX3, DDX39A, HSP90AB1, HSP90AA1, DAK, DSTN, UBC, SUMO2, COPS5, SKIL,</p> <p>Protein Size: 376</p>
Molecular Weight:	41 kDa
Gene ID:	60314
NCBI Accession:	NM_021640 , NP_067653
UniProt:	Q86UA3

Application Details

Application Notes:	Optimal working dilutions should be determined experimentally by the investigator.
Comment:	Antigen size: 376 AA
Restrictions:	For Research Use only

Handling

Format:	Liquid
Concentration:	Lot specific
Buffer:	Liquid. Purified antibody supplied in 1x PBS buffer with 0.09 % (w/v) sodium azide and 2 % sucrose.
Preservative:	Sodium azide
Precaution of Use:	This product contains Sodium azide: a POISONOUS AND HAZARDOUS SUBSTANCE which should be handled by trained staff only.
Handling Advice:	Avoid repeated freeze-thaw cycles.
Storage:	-20 °C
Storage Comment:	For short term use, store at 2-8°C up to 1 week. For long term storage, store at -20°C in small aliquots to prevent freeze-thaw cycles.



Western Blotting

Image 1. WB Suggested Anti-C12orf10 Antibody Titration: 1.0 ug/ml Positive Control: MCF7 Whole Cell C12orf10 is supported by BioGPS gene expression data to be expressed in MCF7