

Datasheet for ABIN2790528  
**anti-Cilp2 antibody (N-Term)**[Go to Product page](#)

## 1 Image

## Overview

|                      |   |
|----------------------|---|
| Quantity:            | 100 µL  |
| Target:              | Cilp2   |
| Binding Specificity: | N-Term  |
| Reactivity:          | Human, Mouse, Cow, Dog, Guinea Pig, Horse, Rat, Zebrafish (Danio rerio) |
| Host:                | Rabbit  |
| Clonality:           | Polyclonal  |
| Conjugate:           | This Cilp2 antibody is un-conjugated                                    |
| Application:         | Western Blotting (WB)   |

## Product Details

|                       |  |
|-----------------------|--|
| Immunogen:            | The immunogen is a synthetic peptide directed towards the N-terminal region of Human CILP2               |
| Sequence:             | RVHLNPTRGF WCLNREQPRG RRCSNYHVRF RCPLEASWGA WGPWGPCSGS   |
| Predicted Reactivity: | Cow: 100%, Dog: 100%, Guinea Pig: 100%, Horse: 100%, Human: 100%, Mouse: 100%, Rat: 100%, Zebrafish: 77% |
| Characteristics:      | This is a rabbit polyclonal antibody against CILP2. It was validated on Western Blot.                    |
| Purification:         | Affinity Purified  |

## Target Details

|                   |  |
|-------------------|--|
| Target:           | Cilp2                                    |
| Alternative Name: | CILP2 ( <a href="#">Cilp2 Products</a> ) |

## Target Details

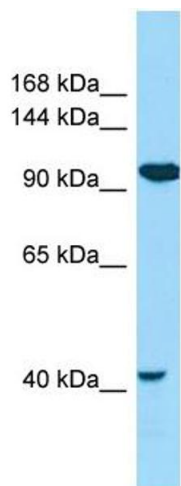
|                   |   |
|-------------------|---|
| Background:       | CILP2 may play a role in cartilage scaffolding.<br>Alias Symbols: CLIP-2, MGC45771<br>Protein Interaction Partner: FBXO6,<br>Protein Size: 1156 |
| Molecular Weight: | 127 kDa   |
| Gene ID:          | 148113  |
| NCBI Accession:   | <a href="#">NM_153221</a> , <a href="#">NP_694953</a>   |
| UniProt:          | <a href="#">Q8IUL8</a>  |

## Application Details

|                    |  |
|--------------------|--|
| Application Notes: | Optimal working dilutions should be determined experimentally by the investigator. |
| Comment:           | Antigen size: 1156 AA  |
| Restrictions:      | For Research Use only  |

## Handling

|                    |   |
|--------------------|---|
| Format:            | Liquid  |
| Concentration:     | Lot specific  |
| Buffer:            | Liquid. Purified antibody supplied in 1x PBS buffer with 0.09 % (w/v) sodium azide and 2 % sucrose.                                     |
| Preservative:      | Sodium azide  |
| Precaution of Use: | This product contains Sodium azide: a POISONOUS AND HAZARDOUS SUBSTANCE which should be handled by trained staff only.                  |
| Handling Advice:   | Avoid repeated freeze-thaw cycles.  |
| Storage:           | -20 °C  |
| Storage Comment:   | For short term use, store at 2-8°C up to 1 week. For long term storage, store at -20°C in small aliquots to prevent freeze-thaw cycles. |



Western Blotting

**Image 1.** WB Suggested Anti-CILP2 Antibody Titration: 1.0 ug/ml Positive Control: COLO205 Whole Cell