

Datasheet for ABIN2790531

**anti-CPNE8 antibody (C-Term)**[Go to Product page](#)**1** Image

## Overview

Quantity:	100 µL
Target:	CPNE8
Binding Specificity:	C-Term
Reactivity:	Human, Mouse, Rat, Cow, Zebrafish (Danio rerio), Guinea Pig, Rabbit, Dog, Horse
Host:	Rabbit
Clonality:	Polyclonal
Conjugate:	This CPNE8 antibody is un-conjugated
Application:	Western Blotting (WB)

## Product Details

Immunogen:	The immunogen is a synthetic peptide directed towards the C-terminal region of Human CPNE8
Sequence:	AQTKESIVNA SKLPMSIIIV GVGPAEFDAM VELDGDDVRV SSRGKYAERD
Predicted Reactivity:	Cow: 100%, Dog: 100%, Guinea Pig: 100%, Horse: 100%, Human: 100%, Mouse: 100%, Rabbit: 100%, Rat: 100%, Zebrafish: 86%
Characteristics:	This is a rabbit polyclonal antibody against CPNE8. It was validated on Western Blot.
Purification:	Affinity Purified

## Target Details

Target:	CPNE8
Alternative Name:	CPNE8 ( <a href="#">CPNE8 Products</a> )

## Target Details

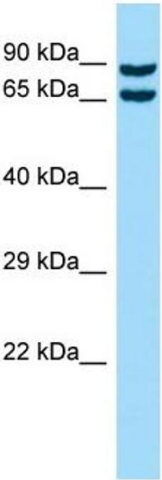
Background:	Calcium-dependent membrane-binding proteins may regulate molecular events at the interface of the cell membrane and cytoplasm. This gene is one of several genes that encode a calcium-dependent protein containing two N-terminal type II C2 domains and an integrin A domain-like sequence in the C-terminus.  Alias Symbols: -  Protein Interaction Partner: UBC, CYSRT1, LAMTOR2, ARRB1, ELAVL1,  Protein Size: 564
Molecular Weight:	62 kDa
Gene ID:	144402
NCBI Accession:	<a href="#">NM_153634</a> , <a href="#">NP_705898</a>
UniProt:	<a href="#">Q86YQ8</a>

## Application Details

Application Notes:	Optimal working dilutions should be determined experimentally by the investigator.
Comment:	Antigen size: 564 AA
Restrictions:	For Research Use only

## Handling

Format:	Liquid
Concentration:	Lot specific
Buffer:	Liquid. Purified antibody supplied in 1x PBS buffer with 0.09 % (w/v) sodium azide and 2 % sucrose.
Preservative:	Sodium azide
Precaution of Use:	This product contains Sodium azide: a POISONOUS AND HAZARDOUS SUBSTANCE which should be handled by trained staff only.
Handling Advice:	Avoid repeated freeze-thaw cycles.
Storage:	-20 °C
Storage Comment:	For short term use, store at 2-8°C up to 1 week. For long term storage, store at -20°C in small aliquots to prevent freeze-thaw cycles.



Western Blotting

**Image 1.** Host: Rabbit Target Name: CPNE8 Sample Type: HT1080 Whole Cell lysates Antibody Dilution: 1.0ug/ml