

Datasheet for ABIN2790539  
**anti-EIF4E1B antibody (Middle Region)**[Go to Product page](#)

## 1 Image

## Overview

Quantity:	100 µL
Target:	EIF4E1B
Binding Specificity:	Middle Region
Reactivity:	Human, Cow, Dog, Guinea Pig, Horse, Mouse, Rabbit, Rat, Zebrafish (Danio rerio)
Host:	Rabbit
Clonality:	Polyclonal
Conjugate:	This EIF4E1B antibody is un-conjugated
Application:	Western Blotting (WB)

## Product Details

Immunogen:	The immunogen is a synthetic peptide directed towards the middle region of Human EIF4E1B
Sequence:	CDYALFKDGI QPMWEDSRNK RGGRWLVS LA KQQRHIELD R LWLETLLCLI
Predicted Reactivity:	Cow: 100%, Dog: 100%, Guinea Pig: 100%, Horse: 100%, Human: 100%, Mouse: 79%, Rabbit: 86%, Rat: 93%, Zebrafish: 85%
Characteristics:	This is a rabbit polyclonal antibody against EIF4E1B. It was validated on Western Blot.
Purification:	Affinity Purified

## Target Details

Target:	EIF4E1B
Alternative Name:	EIF4E1B ( <a href="#">EIF4E1B Products</a> )

## Target Details

Background:	EIF4E1B recognizes and binds the 7-methylguanosine-containing mRNA cap during an early step in the initiation of protein synthesis and facilitates ribosome binding by inducing the unwinding of the mRNAs secondary structure. Alias Symbols: FLJ36951 Protein Size: 242
-------------	---------------------------------------------------------------------------------------------------------------------------------------------------------------------------------------------------------------------------------------------------------------------------------

Molecular Weight:	27 kDa
-------------------	--------

Gene ID:	253314
----------	--------

NCBI Accession:	<a href="#">NM_001099408</a> , <a href="#">NP_001092878</a>
-----------------	-------------------------------------------------------------

UniProt:	<a href="#">A6NMX2</a>
----------	------------------------

## Application Details

Application Notes:	Optimal working dilutions should be determined experimentally by the investigator.
--------------------	------------------------------------------------------------------------------------

Comment:	Antigen size: 242 AA
----------	----------------------

Restrictions:	For Research Use only
---------------	-----------------------

## Handling

Format:	Liquid
---------	--------

Concentration:	Lot specific
----------------	--------------

Buffer:	Liquid. Purified antibody supplied in 1x PBS buffer with 0.09 % (w/v) sodium azide and 2 % sucrose.
---------	-----------------------------------------------------------------------------------------------------

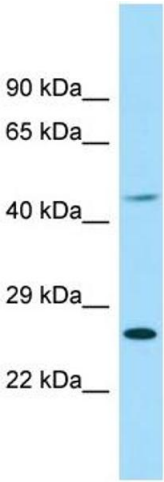
Preservative:	Sodium azide
---------------	--------------

Precaution of Use:	This product contains Sodium azide: a POISONOUS AND HAZARDOUS SUBSTANCE which should be handled by trained staff only.
--------------------	------------------------------------------------------------------------------------------------------------------------

Handling Advice:	Avoid repeated freeze-thaw cycles.
------------------	------------------------------------

Storage:	-20 °C
----------	--------

Storage Comment:	For short term use, store at 2-8°C up to 1 week. For long term storage, store at -20°C in small aliquots to prevent freeze-thaw cycles.
------------------	-----------------------------------------------------------------------------------------------------------------------------------------



Western Blotting

**Image 1.** WB Suggested Anti-EIF4E1B Antibody Titration:  
1.0 ug/ml Positive Control: NCI-H226 Whole Cell