

Datasheet for ABIN2790556
anti-LRRC10 antibody (C-Term)[Go to Product page](#)

1 Image

Overview

Quantity:	100 µL
Target:	LRRC10
Binding Specificity:	C-Term
Reactivity:	Human, Cow, Rabbit
Host:	Rabbit
Clonality:	Polyclonal
Conjugate:	This LRRC10 antibody is un-conjugated
Application:	Western Blotting (WB)

Product Details

Immunogen:	The immunogen is a synthetic peptide directed towards the C-terminal region of Human LRRC10
Sequence:	PKVAKGVRRV GRWAEETPEP DPRKARRYAL VREESQELQA PVPLLPPTNS
Predicted Reactivity:	Cow: 85%, Human: 100%, Rabbit: 91%
Characteristics:	This is a rabbit polyclonal antibody against LRRC10. It was validated on Western Blot.
Purification:	Affinity Purified

Target Details

Target:	LRRC10
Alternative Name:	LRRC10 (LRRC10 Products)

Target Details

Background: LRRC10 may play important roles in cardiac development and/or cardiac function.
Alias Symbols: HRLRRP, LRRC10A, MGC125812
Protein Size: 277

Molecular Weight: 30 kDa

Gene ID: 376132

NCBI Accession: [NM_201550](#), [NP_963844](#)

UniProt: [Q5BKY1](#)

Application Details

Application Notes: Optimal working dilutions should be determined experimentally by the investigator.

Comment: Antigen size: 277 AA

Restrictions: For Research Use only

Handling

Format: Liquid

Concentration: Lot specific

Buffer: Liquid. Purified antibody supplied in 1x PBS buffer with 0.09 % (w/v) sodium azide and 2 % sucrose.

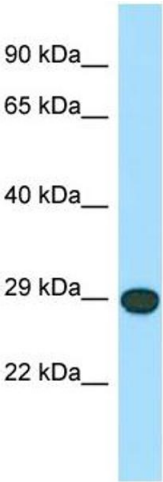
Preservative: Sodium azide

Precaution of Use: This product contains Sodium azide: a POISONOUS AND HAZARDOUS SUBSTANCE which should be handled by trained staff only.

Handling Advice: Avoid repeated freeze-thaw cycles.

Storage: -20 °C

Storage Comment: For short term use, store at 2-8°C up to 1 week. For long term storage, store at -20°C in small aliquots to prevent freeze-thaw cycles.



Western Blotting

Image 1. WB Suggested Anti-LRRC10 Antibody Titration:
1.0 ug/ml Positive Control: PANC1 Whole Cell