

Datasheet for ABIN2790557  
**anti-LRRC10 antibody (C-Term)**[Go to Product page](#)

## 1 Image

## Overview

Quantity:	100 µL
Target:	LRRC10
Binding Specificity:	C-Term
Reactivity:	Human, Mouse, Rat, Cow, Rabbit, Dog, Guinea Pig
Host:	Rabbit
Clonality:	Polyclonal
Conjugate:	This LRRC10 antibody is un-conjugated
Application:	Western Blotting (WB)

## Product Details

Immunogen:	The immunogen is a synthetic peptide directed towards the C-terminal region of Human LRRC10
Sequence:	SSLKLVYDH NPCRNAPKVA KGVRRVGRWA EETPEPDPRK ARRYALVREE
Predicted Reactivity:	Cow: 100%, Dog: 100%, Guinea Pig: 93%, Human: 100%, Mouse: 100%, Rabbit: 100%, Rat: 86%
Characteristics:	This is a rabbit polyclonal antibody against LRRC10. It was validated on Western Blot.
Purification:	Affinity Purified

## Target Details

Target:	LRRC10
Alternative Name:	LRRC10 ( <a href="#">LRRC10 Products</a> )

## Target Details

Background: LRRC10 may play important roles in cardiac development and/or cardiac function.  
Alias Symbols: HRLRRP, LRRC10A, MGC125812  
Protein Size: 277

Molecular Weight: 30 kDa

Gene ID: 376132

NCBI Accession: [NM\\_201550](#), [NP\\_963844](#)

UniProt: [Q5BKY1](#)

## Application Details

Application Notes: Optimal working dilutions should be determined experimentally by the investigator.

Comment: Antigen size: 277 AA

Restrictions: For Research Use only

## Handling

Format: Liquid

Concentration: Lot specific

Buffer: Liquid. Purified antibody supplied in 1x PBS buffer with 0.09 % (w/v) sodium azide and 2 % sucrose.

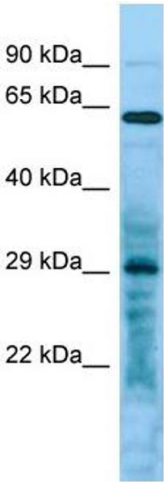
Preservative: Sodium azide

Precaution of Use: This product contains Sodium azide: a POISONOUS AND HAZARDOUS SUBSTANCE which should be handled by trained staff only.

Handling Advice: Avoid repeated freeze-thaw cycles.

Storage: -20 °C

Storage Comment: For short term use, store at 2-8°C up to 1 week. For long term storage, store at -20°C in small aliquots to prevent freeze-thaw cycles.



Western Blotting

**Image 1.** Host: Rabbit Target Name: LRRC10 Sample Type: Hela Whole Cell lysates Antibody Dilution: 1.0ug/ml