



[Go to Product page](#)

Datasheet for ABIN2790572
anti-PPP1R1C antibody (C-Term)

1 Image

Overview

Quantity:	100 µL
Target:	PPP1R1C
Binding Specificity:	C-Term
Reactivity:	Mouse, Human, Rat, Rabbit, Cow, Dog, Guinea Pig
Host:	Rabbit
Clonality:	Polyclonal
Conjugate:	This PPP1R1C antibody is un-conjugated
Application:	Western Blotting (WB)

Product Details

Immunogen:	The immunogen is a synthetic peptide directed towards the C-terminal region of Human PPP1R1C
Sequence:	GELQNASPKQ RKQSVYTPPT IKGVKHLKGQ NESAFPEEEEE GTNEREEQRD
Predicted Reactivity:	Cow: 85%, Dog: 100%, Guinea Pig: 93%, Human: 100%, Mouse: 100%, Rabbit: 93%, Rat: 100%
Characteristics:	This is a rabbit polyclonal antibody against PPP1R1C. It was validated on Western Blot.
Purification:	Affinity Purified

Target Details

Target:	PPP1R1C
Alternative Name:	PPP1R1C (PPP1R1C Products)

Target Details

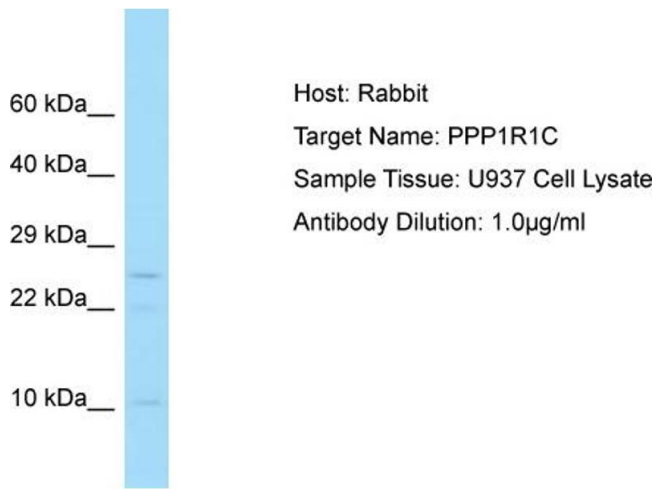
Background:	<p>Protein phosphatase-1 (PP1) is a major serine/threonine phosphatase that regulates a variety of cellular functions. PP1 consists of a catalytic subunit and regulatory subunits that determine the subcellular localization of PP1 or regulate its function. PPP1R1C belongs to a group of PP1 inhibitory subunits that are themselves regulated by phosphorylation.</p> <p>Alias Symbols: IPP5</p> <p>Protein Size: 109</p>
Molecular Weight:	11 kDa
Gene ID:	151242
NCBI Accession:	NM_001080545 , NP_001074014
UniProt:	Q8WVI7

Application Details

Application Notes:	Optimal working dilutions should be determined experimentally by the investigator.
Comment:	Antigen size: 109 AA
Restrictions:	For Research Use only

Handling

Format:	Liquid
Concentration:	Lot specific
Buffer:	Liquid. Purified antibody supplied in 1x PBS buffer with 0.09 % (w/v) sodium azide and 2 % sucrose.
Preservative:	Sodium azide
Precaution of Use:	This product contains Sodium azide: a POISONOUS AND HAZARDOUS SUBSTANCE which should be handled by trained staff only.
Handling Advice:	Avoid repeated freeze-thaw cycles.
Storage:	-20 °C
Storage Comment:	For short term use, store at 2-8°C up to 1 week. For long term storage, store at -20°C in small aliquots to prevent freeze-thaw cycles.



Western Blotting

Image 1. Host: Rabbit Target Name: PPP1R1C Sample Tissue: Human U937 Whole Cell Antibody Dilution: 1 ug/ml