



[Go to Product page](#)

Datasheet for ABIN2790574
anti-RASL11A antibody (N-Term)

1 Image

Overview

Quantity:	100 µL
Target:	RASL11A
Binding Specificity:	N-Term
Reactivity:	Human, Cow, Dog, Guinea Pig, Horse, Mouse, Rabbit, Rat, Zebrafish (Danio rerio)
Host:	Rabbit
Clonality:	Polyclonal
Conjugate:	This RASL11A antibody is un-conjugated
Application:	Western Blotting (WB)

Product Details

Immunogen:	The immunogen is a synthetic peptide directed towards the N-terminal region of Human RASL11A
Sequence:	SAMIVRFLTK RFIGDYEPNT GKLYSRLVYV EGDQLSLQIQ DTPGGVQIQD
Predicted Reactivity:	Cow: 100%, Dog: 100%, Guinea Pig: 100%, Horse: 100%, Human: 100%, Mouse: 100%, Rabbit: 100%, Rat: 100%, Zebrafish: 92%
Characteristics:	This is a rabbit polyclonal antibody against RASL11A. It was validated on Western Blot.
Purification:	Affinity Purified

Target Details

Target:	RASL11A
---------	---------

Target Details

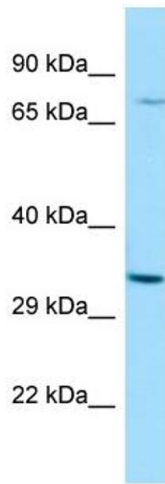
Alternative Name:	RASL11A (RASL11A Products)
Background:	RASL11A is a member of the small GTPase protein family with a high degree of similarity to RAS proteins. Alias Symbols: - Protein Interaction Partner: ELAVL1, Protein Size: 242
Molecular Weight:	27 kDa
Gene ID:	387496
NCBI Accession:	NM_206827 , NP_996563
UniProt:	Q6T310

Application Details

Application Notes:	Optimal working dilutions should be determined experimentally by the investigator.
Comment:	Antigen size: 242 AA
Restrictions:	For Research Use only

Handling

Format:	Liquid
Concentration:	Lot specific
Buffer:	Liquid. Purified antibody supplied in 1x PBS buffer with 0.09 % (w/v) sodium azide and 2 % sucrose.
Preservative:	Sodium azide
Precaution of Use:	This product contains Sodium azide: a POISONOUS AND HAZARDOUS SUBSTANCE which should be handled by trained staff only.
Handling Advice:	Avoid repeated freeze-thaw cycles.
Storage:	-20 °C
Storage Comment:	For short term use, store at 2-8°C up to 1 week. For long term storage, store at -20°C in small aliquots to prevent freeze-thaw cycles.



Western Blotting

Image 1. WB Suggested Anti-RASL11A Antibody Titration:
1.0 ug/ml Positive Control: MCF7 Whole Cell