

Datasheet for ABIN2790577
anti-REEP3 antibody (C-Term)[Go to Product page](#)

1 Image

Overview

Quantity:	100 µL
Target:	REEP3
Binding Specificity:	C-Term
Reactivity:	Human, Rat, Pig, Rabbit, Guinea Pig, Horse
Host:	Rabbit
Clonality:	Polyclonal
Conjugate:	This REEP3 antibody is un-conjugated
Application:	Western Blotting (WB)

Product Details

Immunogen:	The immunogen is a synthetic peptide directed towards the C-terminal region of Human REEP3
Sequence:	HDLTTIQGDE PVGQRPYQPL PEAKKKSKPA PSESAGYGIP LKDGDEKTDE
Predicted Reactivity:	Guinea Pig: 79%, Horse: 86%, Human: 100%, Pig: 93%, Rabbit: 79%, Rat: 93%
Characteristics:	This is a rabbit polyclonal antibody against REEP3. It was validated on Western Blot.
Purification:	Affinity Purified

Target Details

Target:	REEP3
Alternative Name:	REEP3 (REEP3 Products)
Background:	REEP3 may enhance the cell surface expression of odorant receptors.

Target Details

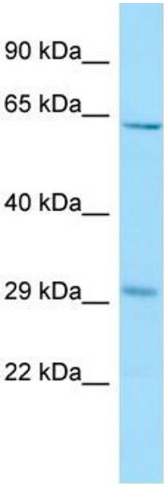
	Alias Symbols: C10orf74 Protein Interaction Partner: UBC, Protein Size: 255
Molecular Weight:	28 kDa
Gene ID:	221035
NCBI Accession:	NM_001001330 , NP_001001330
UniProt:	Q6NUK4

Application Details

Application Notes:	Optimal working dilutions should be determined experimentally by the investigator.
Comment:	Antigen size: 255 AA
Restrictions:	For Research Use only

Handling

Format:	Liquid
Concentration:	Lot specific
Buffer:	Liquid. Purified antibody supplied in 1x PBS buffer with 0.09 % (w/v) sodium azide and 2 % sucrose.
Preservative:	Sodium azide
Precaution of Use:	This product contains Sodium azide: a POISONOUS AND HAZARDOUS SUBSTANCE which should be handled by trained staff only.
Handling Advice:	Avoid repeated freeze-thaw cycles.
Storage:	-20 °C
Storage Comment:	For short term use, store at 2-8°C up to 1 week. For long term storage, store at -20°C in small aliquots to prevent freeze-thaw cycles.



Western Blotting

Image 1. WB Suggested Anti-REEP3 Antibody Titration: 1.0 ug/ml Positive Control: MCF7 Whole Cell