



[Go to Product page](#)

Datasheet for ABIN2790579

anti-RPAP1 antibody (N-Term)

1 Image

Overview

Quantity:	100 µL
Target:	RPAP1
Binding Specificity:	N-Term
Reactivity:	Human, Cow, Dog, Guinea Pig, Rabbit, Horse, Pig
Host:	Rabbit
Clonality:	Polyclonal
Conjugate:	This RPAP1 antibody is un-conjugated
Application:	Western Blotting (WB)

Product Details

Immunogen:	The immunogen is a synthetic peptide directed towards the N-terminal region of Human RPAP1
Sequence:	RNQGQCQLPGS SHSFQGPNLV TGKGLRDQEA EQEAQTIHEE NIARLQAMAP
Predicted Reactivity:	Cow: 86%, Dog: 86%, Guinea Pig: 79%, Horse: 93%, Human: 100%, Pig: 93%, Rabbit: 100%
Characteristics:	This is a rabbit polyclonal antibody against RPAP1. It was validated on Western Blot.
Purification:	Affinity Purified

Target Details

Target:	RPAP1
Alternative Name:	RPAP1 (RPAP1 Products)
Background:	This protein forms part of the RNA polymerase II (RNAPII) enzyme complex and may recruit

Target Details

RNAPII to chromatin through its interaction with acetylated histones.

Protein Interaction Partner: POLR2L, UBC, PPIL3, PAICS, LAGE3, IGBP1, TERF2IP, POT1, POLR2J, SRP72, HLTF, POLR2C, POLR2B, NUMA1, KIF11, ILF3, HSPD1, HSPA8, HNRNPA1, ELAVL1, CSNK2B, CENPC, CCT6A, SLFN11, ANAPC1, ARHGAP23, MEPCE, ERBB2IP, IPO9, POLR3B, MCM10, SYTL2, ZFR, PHF8, GPN1, PO

Protein Size: 1315

Molecular Weight: 144 kDa

Gene ID: 26015

Application Details

Application Notes: Optimal working dilution should be determined by the investigator.

Restrictions: For Research Use only

Handling

Format: Liquid

Concentration: 1 mg/mL

Buffer: Liquid. Purified antibody supplied in 1x PBS buffer with 0.09 % (w/v) sodium azide and 2 % sucrose.

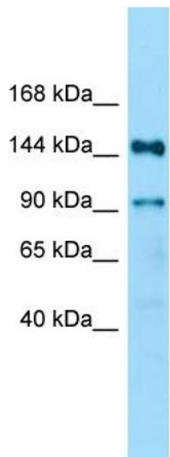
Preservative: Sodium azide

Precaution of Use: This product contains Sodium azide: a POISONOUS AND HAZARDOUS SUBSTANCE which should be handled by trained staff only.

Handling Advice: Avoid repeat freeze-thaw cycles.

Storage: -20 °C

Storage Comment: For short term use, store at 2-8°C up to 1 week. For long term storage, store at -20°C in small aliquots to prevent freeze-thaw cycles.



Host: Rabbit
Target Name: RPAP1
Sample Tissue: Fetal Kidney Lysate
Antibody Dilution: 1.0µg/ml

Western Blotting

Image 1. Host: Rabbit Target Name: RPAP1 Sample Type: Fetal Kidney lysates Antibody Dilution: 1.0ug/ml