



[Go to Product page](#)

Datasheet for ABIN2790582  
**anti-SDAD1 antibody (C-Term)**

1 Image

Overview

Quantity:	100 µL
Target:	SDAD1
Binding Specificity:	C-Term
Reactivity:	Human, Mouse, Zebrafish (Danio rerio), Rabbit, Rat, Cow, Dog, Guinea Pig, Horse
Host:	Rabbit
Clonality:	Polyclonal
Conjugate:	This SDAD1 antibody is un-conjugated
Application:	Western Blotting (WB)

Product Details

Immunogen:	The immunogen is a synthetic peptide directed towards the C-terminal region of Human SDAD1
Sequence:	KTKTNPFSSTNKEKKKQKNFMMMRYSQNVRSKNKRSFREKQLALRDALL
Predicted Reactivity:	Cow: 93%, Dog: 93%, Guinea Pig: 93%, Horse: 93%, Human: 100%, Mouse: 79%, Rabbit: 100%, Rat: 93%, Zebrafish: 86%
Characteristics:	This is a rabbit polyclonal antibody against SDAD1. It was validated on Western Blot.
Purification:	Affinity Purified

Target Details

Target:	SDAD1
Alternative Name:	SDAD1 ( <a href="#">SDAD1 Products</a> )

## Target Details

---

Background: SDAD1 is required for 60S pre-ribosomal subunits export to the cytoplasm.  
Protein Interaction Partner: UBC, TARBP2, ADARB1, TARDBP, CSNK2A2, WHSC1, LAMP1, ELAVL1, TGIF1,  
Protein Size: 590

---

Molecular Weight: 64 kDa

---

Gene ID: 55153

---

## Application Details

---

Application Notes: Optimal working dilution should be determined by the investigator.

---

Restrictions: For Research Use only

---

## Handling

---

Format: Liquid

---

Concentration: 1 mg/mL

---

Buffer: Liquid. Purified antibody supplied in 1x PBS buffer with 0.09 % (w/v) sodium azide and 2 % sucrose.

---

Preservative: Sodium azide

---

Precaution of Use: This product contains Sodium azide: a POISONOUS AND HAZARDOUS SUBSTANCE which should be handled by trained staff only.

---

Handling Advice: Avoid repeat freeze-thaw cycles.

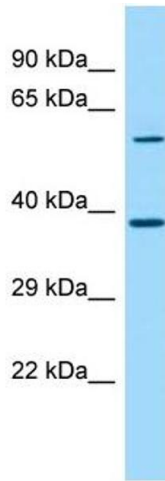
---

Storage: -20 °C

---

Storage Comment: For short term use, store at 2-8°C up to 1 week. For long term storage, store at -20°C in small aliquots to prevent freeze-thaw cycles.

---



### Western Blotting

Image 1.