

Datasheet for ABIN2790585

anti-SLC35D1 antibody (Middle Region)[Go to Product page](#)**1** Image

Overview

Quantity:	100 µL
Target:	SLC35D1
Binding Specificity:	Middle Region
Reactivity:	Human, Mouse, Rat, Guinea Pig, Horse, Rabbit, Zebrafish (Danio rerio), Cow, Dog
Host:	Rabbit
Clonality:	Polyclonal
Conjugate:	This SLC35D1 antibody is un-conjugated
Application:	Western Blotting (WB)

Product Details

Immunogen:	The immunogen is a synthetic peptide directed towards the middle region of human SLC35D1
Sequence:	SDLAFDLEGY AFILINDVLT AANGAYVKQK LDSKELGKYG LLYYNALFM
Predicted Reactivity:	Cow: 100%, Dog: 93%, Guinea Pig: 100%, Horse: 100%, Human: 100%, Mouse: 100%, Rabbit: 100%, Rat: 100%, Zebrafish: 85%
Characteristics:	This is a rabbit polyclonal antibody against SLC35D1. It was validated on Western Blot.
Purification:	Affinity Purified

Target Details

Target:	SLC35D1
Alternative Name:	SLC35D1 (SLC35D1 Products)

Target Details

Background:	<p>Glycosylation of cellular glycoconjugates occurs in the endoplasmic reticulum (ER) and Golgi compartment, and requires transport of nucleotide sugars from the cytosol into the lumen of the ER and Golgi by specific transporters. The protein encoded by this gene resides in the ER, and transports both UDP-glucuronic acid (UDP-GlcA) and UDP-N-acetylgalactosamine (UDP-GalNAc) from the cytoplasm to the ER lumen. It may participate in glucuronidation and/or chondroitin sulfate biosynthesis. Mutations in this gene are associated with Schneckenbecken dysplasia.</p> <p>Alias Symbols: UGTREL7</p> <p>Protein Size: 260</p>
Molecular Weight:	28 kDa
Gene ID:	23169
NCBI Accession:	NM_015139 , NP_055954
UniProt:	B7Z3X2
Pathways:	Glycosaminoglycan Metabolic Process

Application Details

Application Notes:	Optimal working dilution should be determined by the investigator.
Restrictions:	For Research Use only

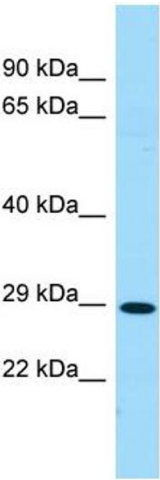
Handling

Format:	Liquid
Concentration:	1 mg/mL
Buffer:	Liquid. Purified antibody supplied in 1x PBS buffer with 0.09 % (w/v) sodium azide and 2 % sucrose.
Preservative:	Sodium azide
Precaution of Use:	This product contains Sodium azide: a POISONOUS AND HAZARDOUS SUBSTANCE which should be handled by trained staff only.
Handling Advice:	Avoid repeat freeze-thaw cycles.
Storage:	-20 °C
Storage Comment:	For short term use, store at 2-8°C up to 1 week. For long term storage, store at -20°C in small

Handling

aliquots to prevent freeze-thaw cycles.

Images



Western Blotting

Image 1.