

Datasheet for ABIN2790588
anti-SPCS3 antibody (Middle Region)[Go to Product page](#)

1 Image

Overview

| | |
|----------------------|---|
| Quantity: | 100 µL |
| Target: | SPCS3 |
| Binding Specificity: | Middle Region |
| Reactivity: | Human, Mouse, Rat, Cow, Rabbit, Dog, Guinea Pig, Horse, Zebrafish (Danio rerio) |
| Host: | Rabbit |
| Clonality: | Polyclonal |
| Conjugate: | This SPCS3 antibody is un-conjugated |
| Application: | Western Blotting (WB) |

Product Details

| | |
|-----------------------|--|
| Immunogen: | The immunogen is a synthetic peptide directed towards the middle region of Human SPCS3 |
| Sequence: | VEDFTGPRER SDLGFITFDI TADLENIFDW NVKQLFLYLS AEYSTKNNAL |
| Predicted Reactivity: | Cow: 100%, Dog: 100%, Guinea Pig: 100%, Horse: 100%, Human: 100%, Mouse: 100%, Rabbit: 100%, Rat: 100%, Zebrafish: 93% |
| Characteristics: | This is a rabbit polyclonal antibody against SPCS3. It was validated on Western Blot. |
| Purification: | Affinity Purified |

Target Details

| | |
|-------------------|--|
| Target: | SPCS3 |
| Alternative Name: | SPCS3 (SPCS3 Products) |

Target Details

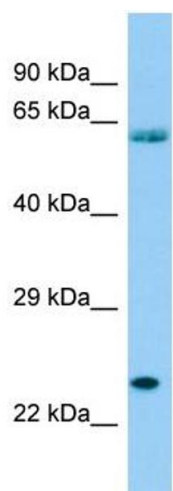
| | |
|-------------------|---|
| Background: | SPCS3 is a component of the microsomal signal peptidase complex which removes signal peptides from nascent proteins as they are translocated into the lumen of the endoplasmic reticulum. Alias Symbols: DKFZp564J1864, FLJ22649, PRO3567, SPC22/23, SPC3, YLR066W Protein Interaction Partner: UBC, FBXO6, env, Protein Size: 180 |
| Molecular Weight: | 20 kDa |
| Gene ID: | 60559 |
| NCBI Accession: | NM_021928 , NP_068747 |
| UniProt: | P61009 |
| Pathways: | Peptide Hormone Metabolism |

Application Details

| | |
|--------------------|--|
| Application Notes: | Optimal working dilutions should be determined experimentally by the investigator. |
| Comment: | Antigen size: 180 AA |
| Restrictions: | For Research Use only |

Handling

| | |
|--------------------|---|
| Format: | Liquid |
| Concentration: | Lot specific |
| Buffer: | Liquid. Purified antibody supplied in 1x PBS buffer with 0.09 % (w/v) sodium azide and 2 % sucrose. |
| Preservative: | Sodium azide |
| Precaution of Use: | This product contains Sodium azide: a POISONOUS AND HAZARDOUS SUBSTANCE which should be handled by trained staff only. |
| Handling Advice: | Avoid repeated freeze-thaw cycles. |
| Storage: | -20 °C |
| Storage Comment: | For short term use, store at 2-8°C up to 1 week. For long term storage, store at -20°C in small aliquots to prevent freeze-thaw cycles. |



Western Blotting

Image 1. Host: Rabbit Target Name: SPCS3 Sample Type: THP-1 Whole Cell lysates Antibody Dilution: 1.0ug/ml